

ARTICLE

<https://doi.org/10.1038/s41467-019-11720-w>

OPEN

Tropical cyclones act to intensify El Niño

Qiuyun Wang¹, Jianping Li^{2,3}, Fei-Fei Jin³, Johnny C.L. Chan⁴, Chunzai Wang⁵, Ruiqiang Ding⁶, Cheng Sun¹, Fei Zheng⁶, Juan Feng¹, Fei Xie¹, Yanjie Li⁶, Fei Li⁷ & Yidan Xu¹

Tropical cyclones (TCs), some of the most influential weather events across the globe, are modulated by the El Niño–Southern Oscillation (ENSO). However, little is known about the feedback of TCs on ENSO. Here, observational and modelling evidence shows that TC activity in the southeastern western North Pacific can affect the Niño-3.4 index 3 months later. Increased TC activity in July–September can significantly contribute to the intensity of ENSO in October–December by weakening the Walker circulation and enhancing eastward-propagating oceanic Kelvin waves in the tropical Pacific. Thus, the greater the accumulated cyclone energy, the stronger (weaker) the El Niño (La Niña). A new physics-based empirical model for ENSO is constructed that significantly outperforms current models in predicting ENSO intensity from July to December and addressing the problem about the target period slippage of ENSO. Results suggest that TCs may provide significant cross-scale feedback to ENSO.

¹College of Global Change and Earth System Sciences (GCESS), Beijing Normal University, 100875 Beijing, China. ²Key Laboratory of Physical Oceanography/Institute for Advanced Ocean Studies, Ocean University of China and Qingdao National Laboratory for Marine Science and Technology, 266100 Qingdao, China. ³Department of Atmospheric Sciences, University of Hawai'i at Mānoa, Honolulu, HI 96822, USA. ⁴School of Energy and Environment, City University of Hong Kong, Hong Kong, China. ⁵State Key Laboratory of Tropical Oceanography (LTO), South China Sea Institute of Oceanology, Chinese Academy of Sciences, 510301 Guangzhou, China. ⁶State Key Laboratory of Numerical Modeling for Atmospheric Sciences and Geophysical Fluid Dynamics (LASG), Institute of Atmospheric Physics, Chinese Academy of Sciences, 100029 Beijing, China. ⁷Department of Lower Atmosphere Observation Research (LAOR), Institute of Atmospheric Physics, Chinese Academy of Sciences, 100029 Beijing, China. Correspondence and requests for materials should be addressed to J.L. (email: ljp@ouc.edu.cn)

El Niño–Southern Oscillation (ENSO) is the leading source of interannual climate variability, influencing weather and climate over the globe^{1–4}. However, owing to initial errors in models and random atmospheric disturbances^{5–9}, ENSO predictability remains a key challenge¹⁰, particularly its intensity^{11–13} and the target period slippage of ENSO¹⁴. Tropical cyclones (TCs), as the most influential weather events globally^{15–17}, have also attracted wide attention^{18–23}. Numerous studies have shown that ENSO modulates TC activity^{24–30}. TCs in the tropical Pacific might have led to an El Niño-like warming in the tropical Pacific during the early Pliocene epoch³¹. In modern times, >30% of TCs worldwide occur in the western North Pacific (WNP), resulting in enormous societal impacts on littoral regions. More TCs tend to be generated in the southeastern WNP²⁶ during El Niño developing years (see Methods). However, the effect of TCs on El Niño intensity has not been examined on interannual timescales. The motivation of this study is to explore the role of the southeastern (10°–20°N, 135°–170°E) WNP TC (in short, WNP TC) activity in El Niño events from the perspective of accumulated cyclone energy (ACE)³². We also consider whether TC activity can be used for ENSO forecasting. Good prediction skill will provide powerful evidence for the role of WNP TCs in ENSO.

Current study demonstrates that the ACE index in the region (10°–20°N, 135°–170°E; hereafter WNP ACE) leads the Niño-3.4 index (N3.4) by about 3 months, as deduced from observations and an intermediate-complexity coupled ocean–atmosphere model^{11,33}. WNP TCs in July–September (J–A–S) can significantly intensify El Niño in October–December (O–N–D); and the greater the ACE, the stronger the El Niño. WNP TCs weaken significantly the Walker circulation by stressing lower-level anomalous westerlies over 0°–10°N in the tropical western–central Pacific and generating a Hadley-like circulation in the tropical western Pacific. TCs also shallow the tropical western Pacific thermocline and enhance eastward-propagating Kelvin waves, resulting in a significant decrease of zonal thermocline gradient in the equatorial Pacific. Consequently, El Niño is intensified. In same way, La Niña is weakened; and the greater the ACE, the weaker the La Niña. In addition, this study constructs a new physics-based empirical model (the ACE + N3.4 model) for ENSO. This new model is significantly better than the current dynamical and statistical models for predicting ENSO intensity from July to December and addressing the target period slippage of ENSO as it predicts ENSO maxima closer to the time they are actually observed. The ACE + N3.4 model can successfully predict the intensity of extreme El Niño in 2015, and it does not show any El Niño signal before October in 2014, instead of a strong or even extreme El Niño to occur later in 2014 as many models' prediction.

Results

The El Niño becomes more intense when the ACE is greater.

There are larger ACE anomalies over the southeastern WNP in El Niño developing years (Supplementary Fig. 1), associated with a southeastward shift of the mean TC genesis location^{27,34}. We find that the WNP ACE leads the N3.4 by ~3 months (see Supplementary Fig. 2). The correlation of the N3.4 with its value 3 months earlier is closely related to the WNP ACE of 3-months earlier during El Niño developing years (see Supplementary Fig. 3 and Supplementary Table 1). The greater the ACE, the stronger the El Niño, particularly for TCs in J–A–S. As seen from Fig. 1a (combined with Supplementary Fig. 4a–e), the mean explained percentages (see Methods) of both the WNP ACE and N3.4 in J–A–S to N3.4 in O–N–D are ~51%. The mean explained percentage of the N3.4-independent ACE in J–A–S to the N3.4 in O–N–D is equivalent to that of the ACE-independent N3.4

(17.3% vs 18%, respectively). The joint explained percentage of the preceding (3 months earlier) ACE and N3.4 is nearly 20% higher than that of either factor alone. An intermediate-complexity coupled ocean–atmosphere model^{11,33} can predict the sea-surface temperature (SST) anomalies pattern well during El Niño developing years. Both the time series of N3.4 and the spatial patterns of the SST anomalies from observations and simulations are similar. The correlation coefficient between observed and simulated N3.4 reaches 0.86 (Supplementary Fig. 5). Model results agree with the aforementioned observations (Fig. 1b and Supplementary Fig. 4f–j). The J–A–S WNP ACE can significantly intensify the O–N–D Niño-3.4 SST anomalies during El Niño developing years (Fig. 2a), whereas the Niño-3.4 SST anomalies associated with simultaneous ACE (Figs. 2b, c) are noticeably weaker. These results support the finding that the J–A–S ACE has an important influence on the O–N–D El Niño. In addition, unlike N3.4, the autocorrelation of the WNP ACE with its value 3 months earlier is not significant (Supplementary Fig. 2a), and the ACE still leads the N3.4 even after removing the simultaneous N3.4 and the autocorrelation of the N3.4 index with its value 3 months earlier (Supplementary Fig. 2b). These results indicate that the lead of WNP ACE index over the N3.4 does not primarily result from the autocorrelation of the N3.4. Therefore, the cross-scale effect of WNP TC activity on El Niño events is not negligible. The mechanism underlying the effects of WNP TCs on El Niño is discussed next.

Influence of daily WNP ACE on westerly anomalies. Taking the year 2015 as an example, as shown in Fig. 3a, daily strong westerly (easterly) anomalies are found on the southern (northern) flanks of TCs. From 1970 to 2016, the mean value of TC-related anomalous westerlies (5.41 m s^{-1}) is 1.81 times that without TC occurrence (2.99 m s^{-1}), and this ratio holds regardless of whether it is an El Niño developing year. This suggests that the enhancement of westerly winds related to TCs is independent of El Niño occurrence. The westerly anomalies associated with TC occurrence shift northward as TCs move northward. The range of latitudes of anomalous westerlies affected by TCs reach 5°–10° south of the TC centre. The regional meridionally averaged zonal wind anomalies on the southern flanks of TCs in 2015 are shown in Fig. 3b. There are stronger anomalous westerlies when TCs are present. The mean value of TC-related anomalous westerlies (4.94 m s^{-1}) is 2.66 times that without TC occurrence (1.86 m s^{-1}) from 1970 to 2016, and this ratio changes little in El Niño developing years. In addition, the centres of strong TC-related westerly anomalies shift westward as TCs move westward. Because the low-pressure zones resulting from TC genesis do not vanish immediately as the TC moves away³⁵, a TC's influence on anomalous westerlies remains after the TC moves away or disappears (Fig. 3c). These features indicate that TC occurrence intensifies the westerly anomalies on the southern flanks of TCs. Anomalous wind forcing related to TCs excites or amplifies Kelvin waves, further affecting the Niño-3.4 SST anomalies³⁶.

Interannual climatic effect of the WNP ACE on El Niño. On interannual timescale, at 850 hPa (Fig. 3d), WNP TCs can lead to anomalous westerlies over 0°–10°N in the tropical western–central Pacific. This might result from tropical semi-geostrophic adjustment processes (see Supplementary Fig. 6a), as more intense WNP TCs lead to a broad area of low pressure in the WNP, and the centre of significant zonal wind anomalies is located south of the selected ACE region (this centre is consistent with the main effect of the mean WNP TC genesis position at 12.07°N, 155.36°E). The anomalous westerlies increase the Niño-3.4 SST anomalies. At 200 hPa (Fig. 3e), anomalous easterlies

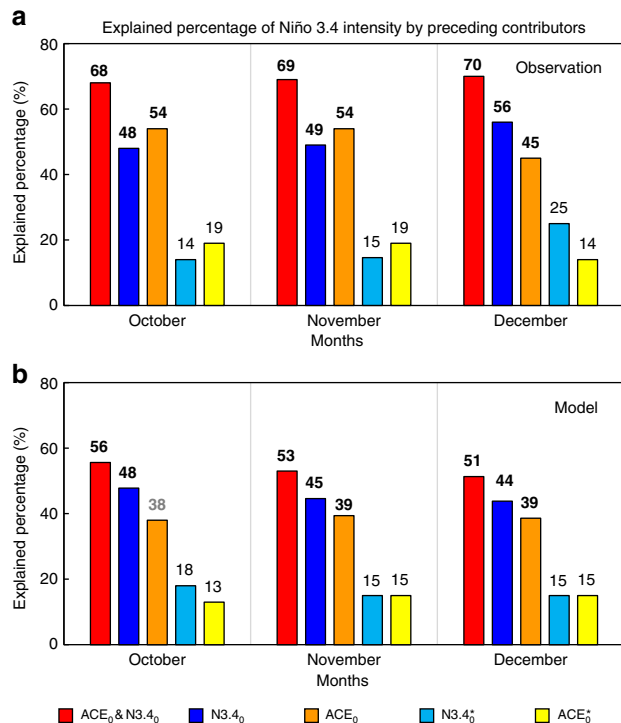


Fig. 1 Explained percentage (%) of the running 3-month mean SST anomaly for the Niño 3.4 region (5°N–5°S, 120°–170°W) (N3.4, an ENSO index) from October–December obtained using the preceding (3-months earlier) contributors' signals during El Niño developing years (1970–2016).

a Observations. **b** Simulated results from the intermediate-complexity coupled ocean-atmosphere model^{11,33}. An El Niño developing year is defined when the above-moderate El Niño events (including moderate events) develops from weak to strong. ACE₀&N3.4₀ (red bars) represents the combined contribution of preceding accumulated cyclone energy (ACE) over the western North Pacific (10°–20°N, 135°–170°E; WNP) and N3.4; N3.4₀ (blue bars) the preceding N3.4; ACE₀ (orange bars) the preceding WNP ACE; N3.4₀* (sky blue bars) the preceding ACE-independent N3.4 (i.e. the preceding N3.4 after removing WNP ACE); and ACE₀* (yellow bars) the preceding N3.4-independent ACE index (i.e. the preceding WNP ACE after removing N3.4). Black (grey) bold font indicates statistical significance above the 95% (90%) confidence level (Student's *t*-test)

resulting from TCs occur from 10°N to 10°S, which do not seem to conform to the ACE locations. The main reason for this is a Hadley-like circulation (20°N–20°S, 135°–170°E) enhanced by the TCs (Fig. 3f) on the basis of tropical semi-geostrophic adjustment processes at 200 hPa (see Supplementary Fig. 6b). Anomalous northerlies south of the equator enhance the symmetry of the wind field in the upper troposphere with respect to the equator (see Supplementary Fig. 6c), intensifying the anomalous upper easterlies over the tropical Pacific. Both the direct effect of asymmetrical anomalous westerlies at lower levels and the indirect effect of the Hadley-like circulation weaken the Walker circulation (5°N–5°S, 120°E–120°W; the Walker index changes from -5.47 to -3.84 m s⁻¹; see Methods) over the equatorial region in J–A–S, thereby enhancing the equatorial Pacific eastward-flowing currents (see Supplementary Fig. 6d), and thereby increasing the Niño-3.4 SST anomalies. The eastward-flowing currents are located north of the equator in J–A–S, which is consistent with lower-level anomalous westerlies. The ACE leads the lower-level westerlies (Walker circulation) in the tropical western–central Pacific by 2 (3) months regardless of whether the preceding westerlies (Walker circulation) or their simultaneous signals are removed (see Supplementary Fig. 7).

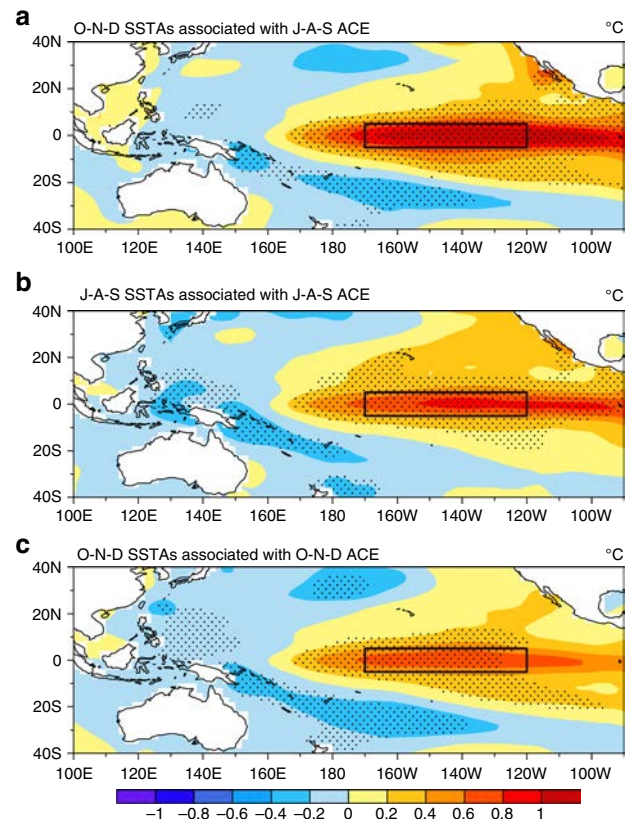


Fig. 2 Tropical Pacific sea-surface temperature (SST) anomalies (°C) associated with the accumulated cyclone energy (ACE) anomalies over the western North Pacific (10°–20°N, 135°–170°E; WNP) in the period 1970–2016. **a** Composite of the O–N–D (each month from October to December) SST anomalies (°C, shading) associated with the J–A–S (each month from July to September) WNP ACE anomalies during the El Niño developing years. An El Niño developing year is defined when the above-moderate El Niño events (including moderate events) develops from weak to strong. **b** Composite of the J–A–S SST anomalies (°C, shading) and the J–A–S WNP ACE anomalies. **c** Composite of the O–N–D WNP SST anomalies (°C, shading) and the O–N–D WNP ACE anomalies. The stippled regions denote statistical significance above the 95% confidence level (Student's *t*-test). The black rectangle denotes the Niño-3.4 region (5°S–5°N, 120°–170°W)

This lead–lag correlation between the ACE and circulation is in accordance with that between the ACE and N3.4 (see Supplementary Fig. 2). Through the effect on the Walker circulation, the Niño-3.4 SST anomalies associated with TCs are strongest after 3 months.

The evolution of the horizontal wind anomalies is also examined (see Supplementary Fig. 8a–c). Compared with the situation in J–A–S, the significant anomalous westerlies related to TCs at 850 hPa shift eastward and become symmetric about the equator in O–N–D, and are accompanied by a significantly weakened Walker circulation. At the upper tropospheric level, the centre of significant anomalous easterlies also shifts eastward. All these effects enhance the eastward-flowing currents, and the centre of the eastward-flowing currents shifts equatorward in O–N–D (see Supplementary Fig. 8d), and the Niño-3.4 SST anomalies significantly increase.

Another possible mechanism is the change in thermocline depth associated with WNP TCs. In J–A–S, TCs can shallow the tropical western Pacific thermocline (Fig. 4a). Agreeing with theory, the observed thermocline is shallowed via Ekman pumping associated with the downdrafts over 0°–10°S. However,

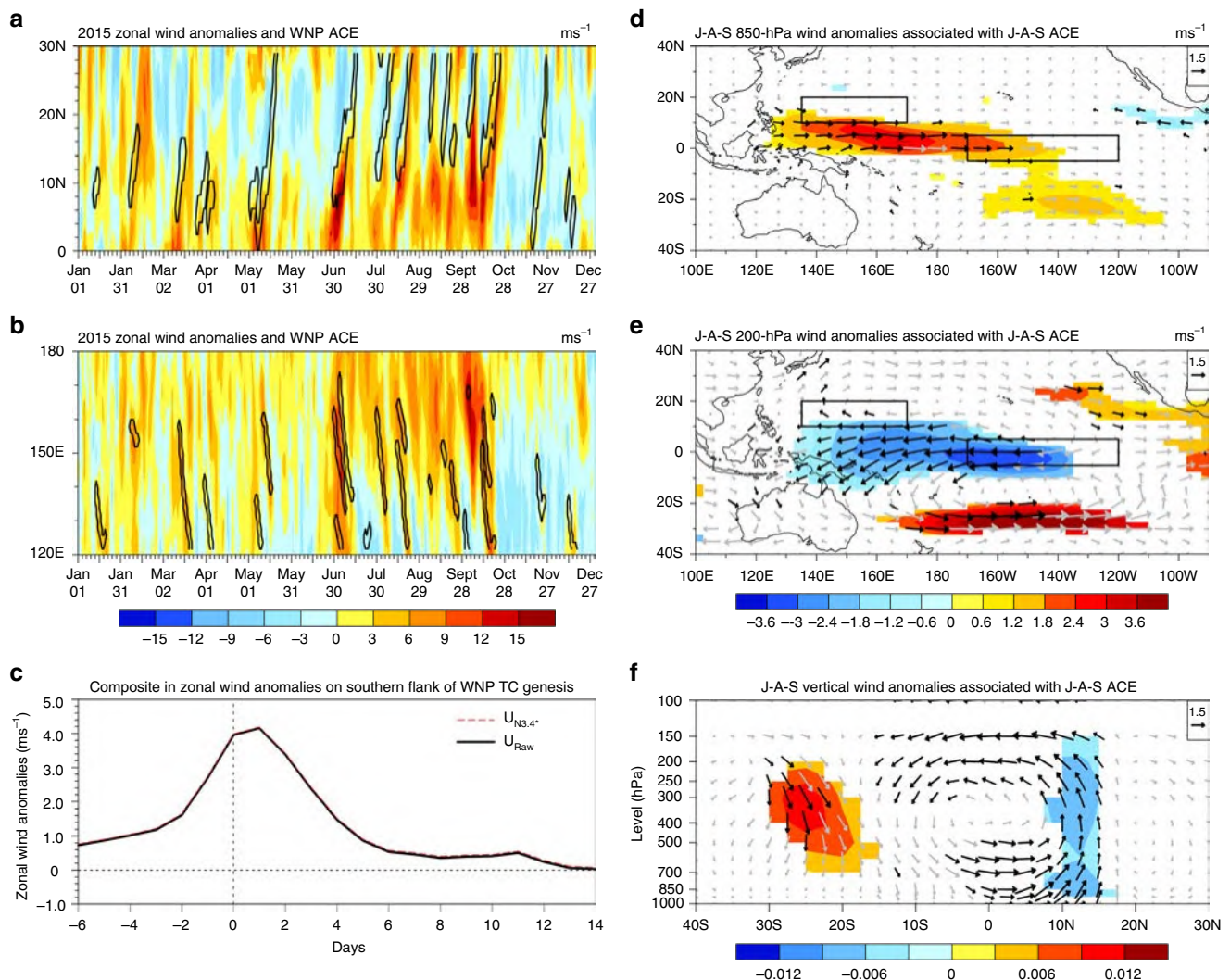


Fig. 3 Wind anomalies and circulation associated with the accumulated cyclone energy (ACE) anomalies over the western North Pacific (10°–20°N, 135°–170°E; WNP). **a** Latitude-time Hovmöller diagram (along 135°–170°E) of zonal wind anomalies (shading, m s^{-1}) in 2015. Black contours indicate the $1 \text{ m}^2 \text{ s}^{-2}$ isoline of WNP ACE, representing the TC life cycle. **b** As in **a**, but for longitude-time (along 0°–15°N). **c** Composite time series of zonal wind anomalies (m s^{-1}) on the southern flank (within 5° of lon_0 and within 10° south of lat_0 ; lon_0 and lat_0 indicate the longitude and latitude of the TC genesis position, respectively) of single TC genesis in the period 1970–2016. Black (red) line indicates the wind anomalies with (without) the contribution of the Niño-3.4 SST. **d** Composite of the 850-hPa zonal (shading) and horizontal (vectors) wind anomalies (m s^{-1}) in J-A-S associated with the J-A-S WNP ACE during El Niño developing years. An El Niño developing year is defined when the above-moderate El Niño events (including moderate events) develops from weak to strong. Shading and black vectors indicate significance above the 95% confidence level using Student's *t*-test. The two black rectangles denote the selected ACE region (10°–20°N, 135°–170°E) and the Niño-3.4 region (5°S–5°N, 120°–170°W). **e** As in **d**, but for the 200-hPa level. **f** As in **d**, but for the vertical *p*-velocity (shading, Pa s^{-1}) and the wind (vectors) in the vertical-meridional plane. Vectors are obtained by the zonal wind anomalies (m s^{-1}) and magnified vertical *p*-velocity ($\times(-200)$).

there are updrafts over 5°–10°N, so theoretically the thermocline in these latitudes should deepen, contrary to what is actually found. One possible reason for this discrepancy is that wind forcing related to TCs excites or amplifies Kelvin waves, further affecting tropical thermocline adjustments^{36,37}. Another is TC turbulent mixing processes, in which strong surface TC winds cool the surface and warm the subsurface waters^{38–42}. This vertical mixing might have a thermodynamic effect on wave formation. Warm water in the tropical western Pacific is carried eastward, in association with enhanced eastward-propagating equatorial Kelvin waves, further deepening the tropical eastern Pacific thermocline and thereby reducing the equatorial Pacific zonal thermocline gradient (Fig. 4c). Due to the weakened Walker circulation, the thermocline at 5°S–15°N in the tropical western Pacific is shallower and flatter in O–N–D than in J–A–S, and the

equatorial Pacific zonal thermocline gradient becomes smaller (Fig. 4b, d), as the Niño-3.4 SST anomalies become stronger. To further investigate the ocean-process effects of WNP ACE on El Niño, the depth-zonal distribution of monthly equatorial potential temperature anomalies averaged between 5°S–5°N during the El Niño developing year is shown in Supplementary Fig. 9. At the beginning of the year, the positive potential temperature anomalies begin to emerge in the western Pacific and then propagate eastward along the main thermocline and accumulate in the equatorial eastern Pacific. From June, the negative potential temperature anomalies grow in the western Pacific because of the eastward transport of warm surface water and upward compensation by cold water, which further enhances positive potential temperature anomalies in the equatorial eastern Pacific by transporting warm surface water. After removing the

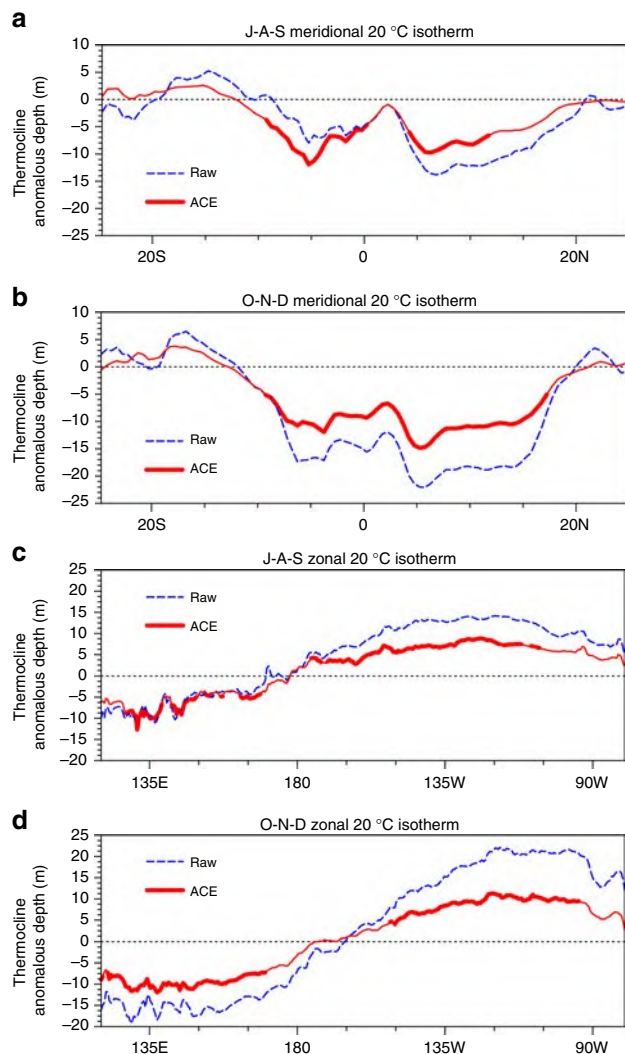


Fig. 4 Thermocline (20°C isotherm depth, m) during El Niño developing years (1970–2010). **a** Meridional distribution (along 135°–170°E) in J–A–S. **b** As in **a**, but for O–N–D. **c**, Zonal distribution (along 5°S–5°N) in J–A–S. **d** As in **c**, but for O–N–D. The blue dashed line indicates the original thermocline; the red line associated with the preceding WNP ACE signal in J–A–S, and the thicker line indicates significance above the 95% confidence level. An El Niño developing year is defined when the above-moderate El Niño events (including moderate events) develops from weak to strong

simultaneous TC signals (Fig. 5a), this change in the potential temperature anomalies decreases, and can even disappear, particularly during the WNP TC season (May–October; Fig. 5b). In addition, when the preceding ACE signal is removed, the potential temperature anomalies also decrease, and can even disappear, particularly in the 3 months after the TC season (Supplementary Fig. 10). All the studied observations indicate that WNP TCs can enhance the transport of warm water from the equatorial western-to-eastern Pacific, thus increasing the Niño-3.4 SST anomalies.

Role of the Madden–Julian Oscillation (MJO). Previous studies^{43,44} indicated the MJO plays an important role in the onset of El Niño and can also affect WNP TC activity on intra-seasonal timescale. Hence, the role of the MJO in the modulation of TCs to the El Niño intensity is investigated. The lead–lag correlation between WNP ACE and SST is largely unaffected by removal of the MJO signal, and the magnitude of the correlation

coefficient only changes slightly (Supplementary Fig. 11). When compared with the original time series, the intensity of N3.4 changes only slightly by removing the MJO signal. This is also true for the WNP ACE. In addition, the intensity of the N3.4 related to the preceding ACE (after removing the MJO signal) is also only slightly changed (Supplementary Fig. 12). Thus, the MJO signal might only slightly affect the modulation of TCs to ENSO intensity on the interannual timescale. In addition, all three types of the MJO conditions (active MJO, inactive MJO, and non-MJO events) occur in J–A–S during eight studied El Niño developing years (Supplementary Fig. 13). There are no significant differences among the occurrence frequency of the three types, and the non-MJO events occur most often, particularly in July (Fig. 6). This suggests that the modulation of TCs to El Niño intensity on an interannual timescale has few dependencies on the MJO conditions. To further verify this conclusion, hit rates (see Methods) between ACE and MJO events in El Niño developing years and a composite year are investigated. Monthly hit rates remain low for both individual years and the composite year (21.8% for July, 35.4% for August and 30.8% for September), except for 2015. Results indicate the MJO does not play a major role in modulating TCs to El Niño intensity.

A new physics-based empirical model for ENSO prediction. In a La Niña event, the key domain of the preceding WNP TCs changes to 10°–25°N, 130°–155°E and WNP TCs have a negative effect on La Niña (Supplementary Fig. 14). The greater the WNP ACE, the weaker the La Niña. Based on the possible physical mechanisms that relate the preceding WNP TCs to ENSO, a new physics-based empirical model for ENSO (the ACE + N3.4 model) is constructed. The predicted skill of the ACE + N3.4 model for ENSO is assessed by comparison with single-factor models (N3.4 model and ACE model), current dynamics and statistical models.

A holdout method (see Methods) is first employed and the N3.4 predicted by models is compared with observations. There is a high correlation coefficient (~0.91) and sign consistency (92%) between the observed N3.4 and that predicted by the ACE + N3.4 model, much higher than for the single-factor N3.4 model (correlation coefficient of 0.75, sign consistency of 79%) and ACE model (correlation coefficient of 0.66, sign consistency of 65%) (Fig. 7a). The root mean square error (RMSE) between the observed N3.4 and that predicted by the ACE + N3.4 model is 0.39°C, which is smaller than that for the N3.4 model (0.58°C) and the ACE model (0.68°C). These results indicate that the ACE + N3.4 model has better prediction skill for N3.4 than single-factor models. Because the ACE model has the lowest prediction skill, we only consider the ACE + N3.4 model and the N3.4 model in further analyses of El Niño and La Niña events. The N3.4 predicted by the ACE + N3.4 model is closer to observations than that predicted by the N3.4 model during the development periods of El Niño and La Niña events (Fig. 7c, e). The peak N3.4 index obtained with the N3.4 model occurs 3 months after the peak in the observations, while the predictions by the ACE + N3.4 model peak at the same time as the observations. The maximum relative advantage of the ACE + N3.4 model for N3.4 relative to the N3.4 model is about 0.62°C in November during the El Niño developing year. This value of the maximum relative advantage is about 43% of the observed anomaly in November. Although the predicted advantage of the ACE + N3.4 model relative to the N3.4 model for N3.4 in other months is smaller than in November, the proportion of the relative advantage in observations in some months might be higher than in November, such as in April, May, June and July. The relative predicted advantage of the ACE + N3.4 model is also evident during the La

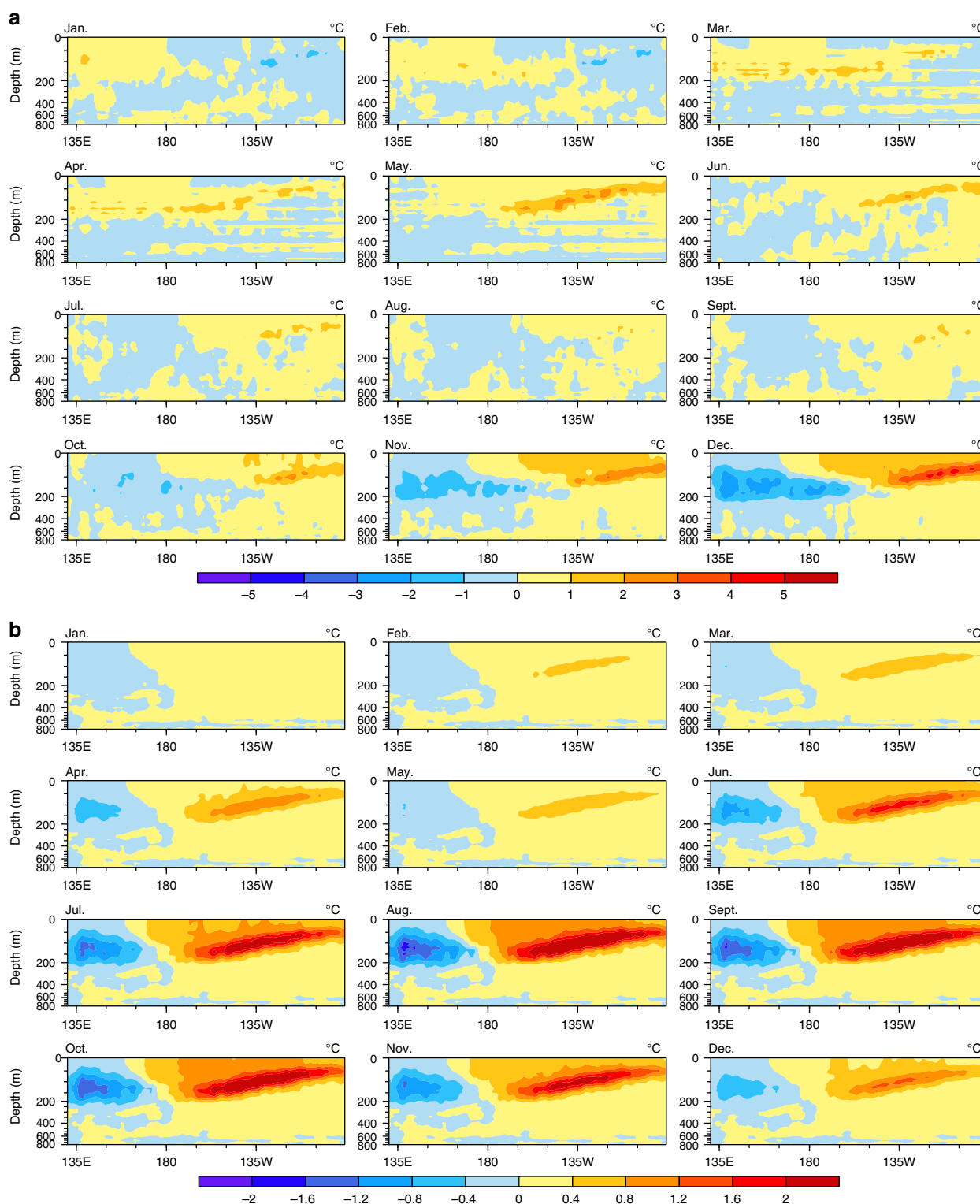


Fig. 5 Composite of the depth-zonal distribution of monthly equatorial potential temperature anomalies averaged between 5°S–5°N (shading; °C) during the El Niño developing years (2004–2016). **a** Distribution of monthly equatorial potential temperature anomalies after removing the simultaneous WNP ACE. **b** As in **a**, but relating to the simultaneous WNP ACE. An El Niño developing year is defined when the above-moderate El Niño events (including moderate events) develops from weak to strong

Niña developing year, with a maximum of nearly 0.48 °C in December; this value of maximum relative advantage is about 50% of the observed value. This proportion might be higher in October and November. The predictions by the ACE + N3.4 and N3.4 models are similar during the decaying periods of both types

of event, because there are few TCs in this period. To evaluate further the predicted ability, a running holdout method is employed. The prediction skill of the ACE + N3.4 model for N3.4 is better than that with the holdout method (Fig. 7b). It does not seem to be very different. The predicted N3.4 from July to

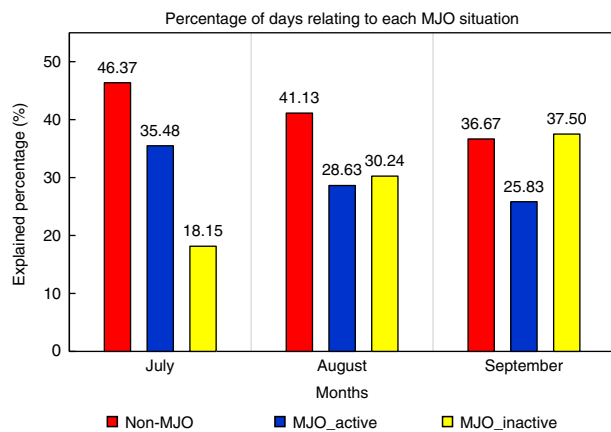


Fig. 6 Occurrence frequency (%) of three Madden-Julian Oscillation (MJO) event types from July to September during eight El Niño developing years in the period 1979–2016. Red bars represent the occurrence frequency (%) of non-MJO, blue for active MJO, and yellow for inactive MJO. An El Niño developing year is defined when the above-moderate El Niño events (including moderate events) develops from weak to strong

December closely approximates observations because of the TC contribution (Supplementary Fig. 15). The ACE + N3.4 model also shows better predicted ability for ENSO than the N3.4 model, especially during the development periods of El Niño and La Niña events (Figs. 7d, f). This predicted ability does not change with the selection of the training period (Supplementary Fig. 16); the mean correlation coefficient between predicted and observed N3.4 is 0.912 and the mean RMSE is 0.376 °C. This verifies the stability of the ACE + N3.4 model.

Model prediction skills for ENSO are compared for the ACE + N3.4 model, 18 dynamical models and eight current statistical models. For the whole year, the N3.4 predicted by the ACE + N3.4 model shows a high correlation (~ 0.92 ; Fig. 8a) and low RMSE (~ 0.35 °C; Fig. 8b) with observations at a lead time of 2 months (see Methods). The correlation coefficient (~ 0.91) and RMSE (~ 0.35 °C) between the average skill level of dynamical models and observed N3.4 are nearly equivalent to those from the ACE + N3.4 model, but the current statistical models clearly show a predicted disadvantage relative to the ACE + N3.4 model; the average correlation coefficient between prediction and observations is ~ 0.88 and the RMSE is ~ 0.42 °C. For the period July–December, the N3.4 predicted by the ACE + N3.4 model shows a higher correlation coefficient (~ 0.94 ; Fig. 8c) and lower RMSE (~ 0.32 °C; Fig. 8d) than the average for both the dynamical models (correlation coefficient of ~ 0.91 , RMSE of ~ 0.40 °C) and pre-existing statistical models (correlation coefficient of ~ 0.90 , RMSE of ~ 0.47 °C). However, for the period January–June, the ACE + N3.4 model shows a predictability barrier, with its prediction skill for N3.4 being close to the average skill of the pre-existing statistical models (Fig. 8e, f). This might be related to the WNP TC genesis season, as there are few TCs in this period, which further verifies the importance of TCs in ENSO forecasts. El Niño and La Niña events are also examined. Compared with the average prediction skill for current dynamical models (Fig. 9a, b), the ACE + N3.4 model has a higher prediction skill for ENSO intensity during the ENSO developing period. Both the N3.4 predicted by the ACE + N3.4 model and the observed N3.4 show a peak at the same time, while the peaks of average predictions from current dynamical models lag the observations. This predicted advantage of the ACE + N3.4 model for ENSO is more evident when compared with the average prediction skill for current statistical models (Supplementary Fig. 17). The unexpected halt of N3.4 growth in 2014 and the development of an

extreme El Niño in 2015 have attracted much research interest⁴⁵. Here, the predicted N3.4 values in 2014/2015 are shown. Unlike most of the current dynamical and statistical models, the ACE + N3.4 model does not show the El Niño signal before October in 2014 (Fig. 9c) because of the anomalous absence of the preceding TCs (Supplementary Fig. 18a). In 2014, the WNP ACE is far below the average ACE level during El Niño events, and is even close to the average WNP ACE during La Niña events. The N3.4 predicted by the ACE model closely follows the variations in the observations after February of that year (Supplementary Fig. 18b). In 2015, the ACE + N3.4 model successfully predicts El Niño intensity close to the observations because the preceding WNP ACE in 2015 was well above the average ACE level of El Niño events. During the 2015 El Niño developing period, the ACE + N3.4 model shows even some predicted advantage relative to the average skill of the dynamical models.

Discussion

In this study, the feedback of WNP TCs on ENSO on interannual timescale is examined using observational data over several decades, revealing that WNP TCs can significantly intensify Niño-3.4 SST 3 months later, particularly for J–A–S TCs. This modulation has few dependencies on the MJO. WNP TCs in J–A–S can affect both the atmospheric and oceanic processes that drive the O–N–D ENSO, which differs from the early Pliocene epoch¹⁸. As shown in Fig. 10, WNP TCs can weaken the Walker circulation via direct effects of equatorial asymmetrically anomalous westerlies at lower tropospheric levels and indirect effects of Hadley-like circulation. TCs can shallow the thermocline in the tropical Western Pacific. Warm water in the tropical Western Pacific is carried eastward, in association with the enhanced eastward-propagating equatorial Kelvin waves, further deepening the thermocline in the tropical eastern Pacific, thereby reducing the gradient of the zonal thermocline in the equatorial Pacific. These two processes lead to an intensified El Niño or weakened La Niña. The greater the WNP ACE, the stronger (weaker) the El Niño (La Niña). Secondly, a new physics-based empirical model (the ACE + N3.4 model) has been constructed based on the preceding ACE and N3.4. Compared with current dynamical and statistical models, the ACE + N3.4 model, although very simple, gives a significantly better ENSO intensity forecast, especially for June–December during the developing period of ENSO. Moreover, the peak N3.4 predicted by current dynamical and statistical models lags the observations (the target period slippage of ENSO¹⁴), but for the ACE + N3.4 model the predictions and observations peak at the same time. The TC genesis season in the WNP directly affects the forecasting ability of the ACE + N3.4 model. The predictions of the ACE + N3.4 model also provide powerful evidence that TCs are essential to ENSO development and can significantly improve the prediction skill for ENSO intensity.

Camargo and Sobel⁴⁶ also found this SST-lagged signal using ACE lag correlations (July–October) with Niño indices for different seasons, but the maximum correlation between the ACE and N3.4 occurs when N3.4 leads ACE in their study. Thus, they suggested that ACE leads N3.4 primarily because of the autocorrelation of SST anomalies in the Niño-3.4 region, and that TCs only play a small positive role in ENSO dynamics. To examine this result, we further investigate the relationship between the ACE in the key domain (10°–20°N, 135°–170°E) from July to October and the seasonal N3.4 during 1970–2016 and 1970–2002 (the latter is the period used in Camargo and Sobel's work). Results indicate that the correlation between ACE from July to October and the seasonal N3.4 reaches a maximum when ACE leads N3.4. Our aforementioned analysis indicates that TCs

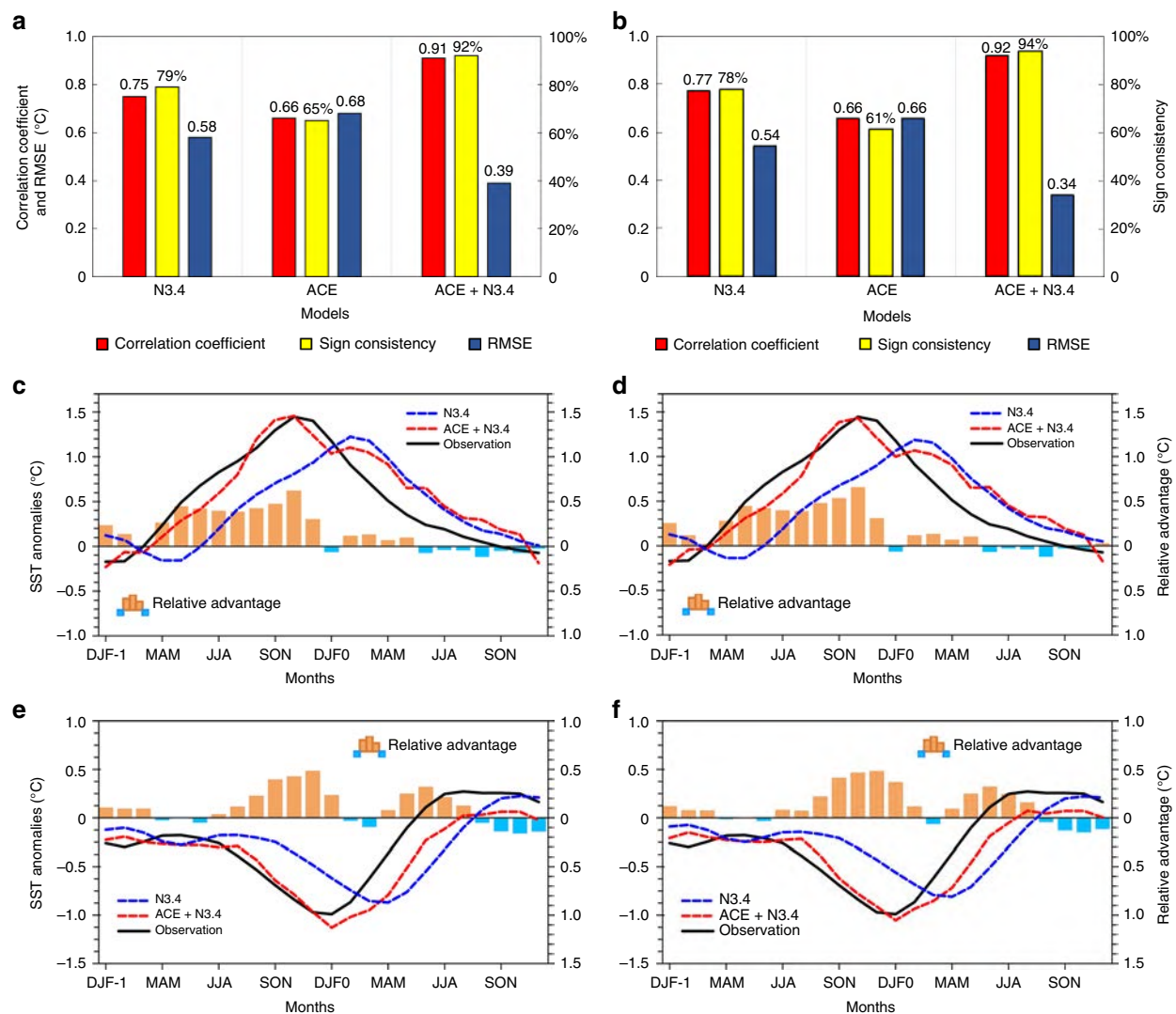


Fig. 7 Prediction skill of three statistical models for the running 3-month mean SST anomaly for the Niño 3.4 region (5°N–5°S, 120°–170°W) (N3.4, an ENSO index) in the hindcasting period 2000–2016. **a** Correlation coefficient (red bars), sign consistency (%), and root mean square error (RMSE, °C) between N3.4 (°C) observations and predictions based on three statistical models (N3.4, ACE, and ACE + N3.4) using the holdout method. **b** Same as **a**, but for results using the running holdout method. **c** Composite time series of N3.4 for observations (black solid line) and predictions (dashed lines) during El Niño events (all events, including 2002–2003, 2004–2005, 2006–2007, 2009–2010, 2014–2015 and 2015–2016) with the holdout method. The blue (red) dashed line is for the N3.4 (ACE + N3.4) model. Bars indicate the amplitude of the models' relative advantage (relative advantage_{model A→model B} = |Model A – Observation| – |Model B – Observation|) between the N3.4 and ACE + N3.4 models. Blue (orange) bars represent the advantage of the N3.4 model relative to the ACE + N3.4 model (the ACE + N3.4 model relative to the N3.4 model). DJF-1 and DJF0 represent the December–February in last year and the year concurring with El Niño, respectively. **d** Same as **c**, but for results using the running holdout method. **e** Same as **c** but for La Niña (all events, including 2000–2001, 2005–2006, 2007–2008, 2008–2009, 2010–2011 and 2011–2012). **f** Same as **e** but for results using the running holdout method.

play an important role in the intensity of ENSO. Therefore, our current finding is evidently different from that of Camargo and Sobel.

Although the primary focus here is on the feedback of WNP TC occurrence on ENSO, other related topics warrant further investigation. For example, the effect of the MJO and other factors on TC genesis and the causality associated with the influence of WNP TCs on Hadley-like circulations and tropical westerlies still need to be further verified in a fully coupled model. Previous studies^{31,37,42} have provided fundamental insights into simulating climatic TCs in a fully coupled model, but were restricted to TC climatic distributions (or to accumulated TCs). Currently, fully coupled models that perform well in simulating interannual variabilities of both TC activity and El Niño are rare, and remain

an important challenge for researchers. In general, although TC activity is usually considered a synoptic event, the cumulative effect of TCs can provide a significant cross-scale feedback to the large-scale atmospheric and oceanic circulations that then affects the intensity of ENSO. TC activity thus helps to improve ENSO forecasts. How this under-investigated relationship between TCs and ENSO is incorporated into existing forecasting models still needs to be determined. In addition, these results highlight the need for further study of the cross-scale effect of short-timescale events on long-timescale events. Perhaps the cumulative effect of TCs in other basins (e.g. hurricanes over the North Atlantic) affects intraseasonal or longer-timescale climatic events in other regions by modulating the large-scale dynamic processes. The cumulative effect may be a critical link between synoptic and

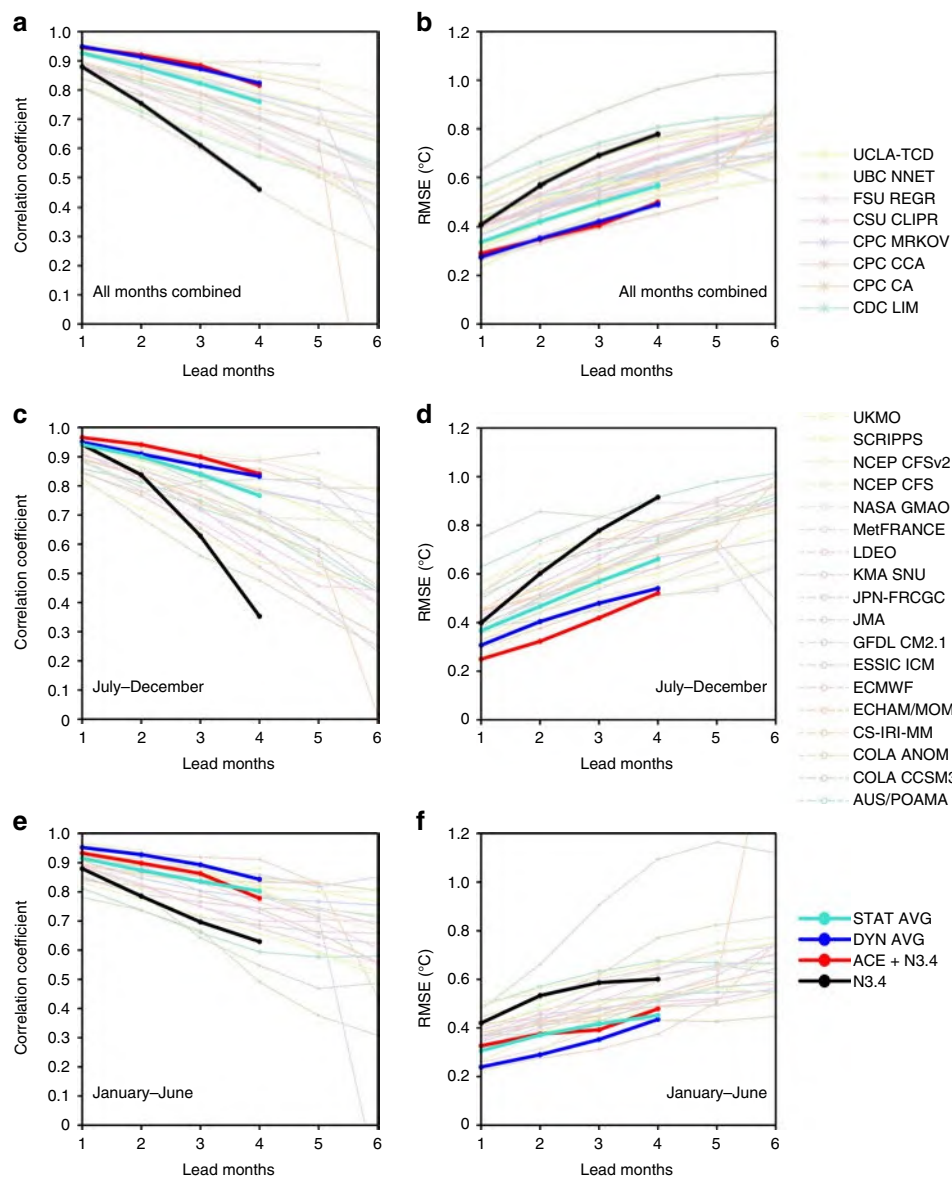


Fig. 8 Temporal correlation and root mean square error (RMSE, °C) between predictions and observations from 2002 to 2016, as a function of lead time. **a** Correlation coefficient for all months combined. Each line represents one model. Eighteen dynamical models (thin dashed lines with circles), eight statistical models (thin solid lines with asterisks), the N3.4 model (black thick line with dots) and the ACE + N3.4 model (red thick line with dots) are employed. The blue (turquoise) thick line with dots denotes the average of the dynamical (statistical) models. **b** Same as **a**, but for RMSE (°C). **c** Same as **a**, but for July–December. **d** Same as **c**, but for RMSE. **e** Same as **a**, but for January–June. **f** Same as **e**, but for RMSE

climatic events. If this cumulative effect of short-term events can be reproduced well in the existing forecasting models, the prediction skill of models would be improved. Furthermore, we can also apply this cumulative effect to cross-scale studies in other disciplines. For example, in oceanography, it may deepen our understanding of the inverse energy cascade from mesoscale eddies to large-scale circulation. All these aspects belong to the category of cross-scale dynamics, which deserves further in-depth study.

Methods

Data pre-processing. A 3-month running mean is taken of all monthly (but not daily) datasets for the period 1970–2016 (1970–2010 for ocean data). N3.4 is the running 3-month mean Niño-3.4 SST anomalies (5°N–5°S, 120°W–170°W). El Niño and La Niña events are selected by a standard used by NOAA (<http://ggweather.com/enso/oni.htm>). Generally, El Niño (La Niña) events are defined as when N3.4 in five consecutive overlapping 3-month periods is at or above (below) the +0.5 °C (–0.5 °C) anomaly. The El Niño (La Niña) developing year is defined as

the year (January–December) that El Niño (La Niña) develops from weak to strong, and the El Niño (La Niña) decaying year is defined when El Niño (La Niña) decays from strong to weak. Above-moderate El Niño (La Niña) events (including moderate events) are defined as when five consecutive overlapping 3-month periods are at or above (below) the 1 °C (–1 °C) SST anomaly and the largest N3.4 index value occurs from October to January. Since 1970, 9 El Niño events (1972–1973, 1982–1983, 1986–1987, 1991–1992, 1994–1995, 1997–1998, 2002–2003, 2009–2010 and 2015–2016) and 10 La Niña events (1970–1971, 1973–1974, 1975–1976, 1988–1989, 1995–1996, 1998–1999, 1999–2000, 2007–2008, 2010–2011 and 2011–2012) meet the above criteria, and in this work, unless otherwise specified, El Niño developing years are the developing years of these nine El Niño events. To increase the reliability of our results, monthly composite and regression analyses are employed in this study. The Walker index = $U_{200} - U_{850}$, where U_{200} and U_{850} are the mean (5°S–5°N, 120°W–120°E) zonal wind anomalies at the 200- and 850-hPa levels, respectively.

Accumulated cyclone information calculation. The accumulated cyclone energy (ACE)³² in each 2° latitude × 2° longitude grid cell is defined as the sum of the squares of the estimated 6-hourly maximum sustained surface wind speed (in m s^{–1}) for all TCs occurring in each grid cell over all 6-h periods; i.e. the grid cell

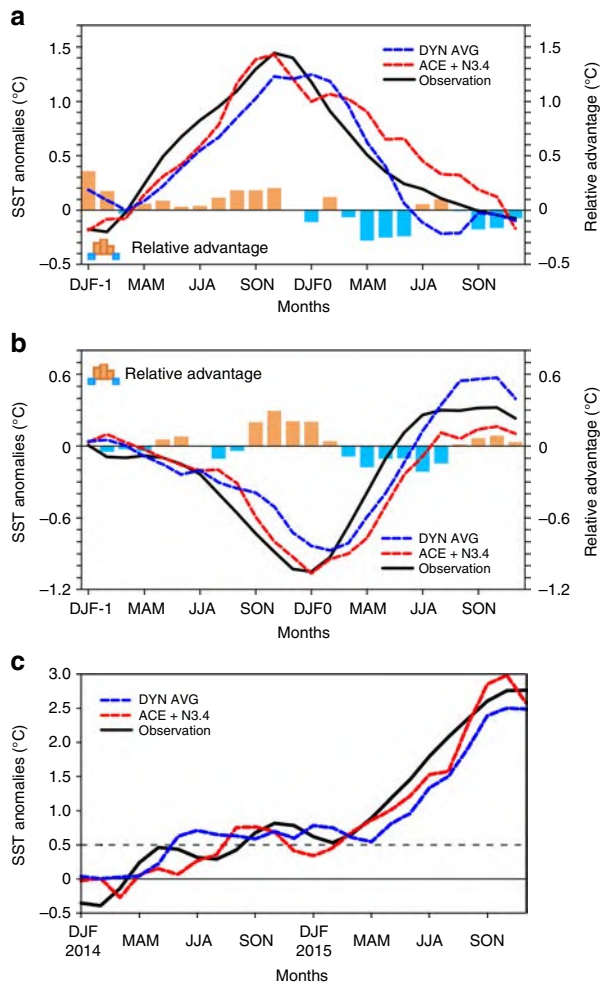


Fig. 9 Time series of the running 3-month mean SST anomaly for the Niño 3.4 region (5°N–5°S, 120°–170°W) (N3.4, an ENSO index, °C) for observations and predictions. **a** Composite time series of N3.4 for all El Niño events in the hindcasting period (2002–2016). The blue dashed line is the average prediction by dynamical models, and the red line the ACE + N3.4 model. The black solid line is the observations. Bars indicate the amplitude of the models' relative advantage between the average of the dynamical models and the ACE + N3.4 model. Blue (orange) bars represent the advantage of the dynamical models average relative to the ACE + N3.4 model (ACE + N3.4 model relative to dynamical models average). DJF-1 and DJF0 represent the December–February in last year and the year concurring with El Niño, respectively. **b** Same as **a**, but for La Niña. **c** Time series (2014–2015) of average N3.4 from dynamical models (blue dashed line), the ACE + N3.4 model (red dashed line), and observations (black solid line)

$ACE = \sum_i V_i^2$, where i is the i^{th} TC in one grid cell and V is its maximum sustained surface wind speed. Then, the ACE index is the anomaly of the sum of the ACE for all grid cells in the selected region. Strong (weak) ACE events are defined as having ACE index values of ≥ 0.5 (≤ -0.5) standard deviation. A threshold value of daily ACE index in the selected region equal to $1 \text{ m}^2 \text{ s}^{-2}$ is used to define the genesis or disappearance of TCs. A single ACE event is associated with the whole process from ACE generation to disappearance.

Model verification. An intermediate-complexity coupled ocean–atmosphere model^{11,33} is employed to verify the role of each factor (e.g. the preceding, 3-months earlier, N3.4 and the WNP ACE) in Fig. 1b (Supplementary Fig. 4f–j). First, the horizontal wind at 925 hPa, as an initial forcing, is added to simulate the Niño-3.4 SST. The horizontal wind is obtained by simultaneous regression with respect to the corresponding factor. Then, the discrepancy between the observed and simulated SST anomalies is corrected. Finally, the simulated SST anomalies

after correction are employed to predict SST anomalies 3-months later in the model. Using TCs as an example, we first obtain the 925-hPa horizontal wind related to TCs by simultaneously regressing ACE on wind. We obtain the simulated SST anomalies by taking the 925-hPa horizontal wind related to TCs as an initial forcing. Then, the discrepancy between the observed and simulated SST anomalies is corrected. Finally, the simulated SST anomalies after correcting for errors are employed to predict SST anomalies 3 months later in the model.

Explained percentage and linearly independent component. Given two variables x and z , a linear regression is calculated as follows:

$$\tilde{z}_x = ax + b \quad (1)$$

where a and b are the regression coefficient and a constant, respectively, and \tilde{z}_x is the part of z associated with x . The explained percentage (p_x) of x for z is

$$p_x = \frac{\tilde{z}_x}{z} \times 100\% \quad (2)$$

Let z_x^* be the component of z linearly independent of x (also referred to as x -independent z), which can be obtained as follows:

$$z_x^* = z - \tilde{z}_x \quad (3)$$

Here, z_x^* is the remainder of z after removal of the signal x . Similarly, the explained percentage of x and y -independent z can be calculated. By the binary regression of x and y on z , z associated with x and y ($\tilde{z}_{x,y}$) is obtained as follows:

$$\tilde{z}_{x,y} = a_1x + a_2y + b \quad (4)$$

where a_1 and a_2 are the regression coefficients. Then, substituting $\tilde{z}_{x,y}$ into Eq. 2, the joint explained percentage of x and y for z is obtained.

Lead-lag correlation. The statistical significance of the correlation between two auto-correlated time series is assessed via a two-tailed Student's t -test using the effective number of degrees of freedom (N^{eff}). N^{eff} is given by the following approximation^{47–51}:

$$\frac{1}{N^{\text{eff}}} \approx \frac{1}{N} + \frac{2}{N} \sum_{j=1}^N \frac{N-j}{N} \rho_{XX}(j) \rho_{YY}(j) \quad (5)$$

Where N is the sample size and $\rho_{XX}(j)$ and $\rho_{YY}(j)$ are the autocorrelations of the sampled time series X and Y at time lag j , respectively.

Composite of a single TC in the period 1970–2016. Figure 3c shows the composite time series of zonal wind anomalies (m s^{-1}) on the southern flank (within 5° of lon_0 , and within 10° south of lat_0) of single TC genesis in the period 1970–2016, where lon_0 and lat_0 indicate the longitude and latitude of the TC genesis position, respectively.

Madden-Julian Oscillation (MJO). A seasonally independent multivariate MJO index developed by Wheeler and Hendon (WH04)⁵² is employed. This index is based on a pair of empirical orthogonal functions (EOFs) of OLR. The two leading principal components (PCs) are used to determine the daily MJO index and phase. Time series of 91-day running mean $\text{PC1}^2 + \text{PC2}^2$ defines the MJO index. In this work, a $\sqrt{\text{PC1}^2 + \text{PC2}^2} \geq 1$ defines MJO events, with others considered to be non-MJO events. A MJO is divided into eight phases. Generally, TCs in the WNP are readily generated in phases 4–7, as the convective centre propagates into the Pacific. In contrast, TC genesis is suppressed in phases 8 and 1–3 when the convective centre is located in the Indian Ocean⁵³. As a result, MJO events are divided into active (phases 4–7) and inactive (phases 8 and 1–3) MJO events. The hit rate is the ratio of days in which the anomalous ACE corresponds to the MJO event type (i.e. positive ACE during active MJO events and negative ACE during inactive MJO events).

Pre-processing of model data. The period from 1970.01 to 1999.12 is defined as the base period. The anomalies of N3.4 and ACE in the model are calculated relative to the base period. Standardized anomalies are then calculated on the basis of the length of the chosen period. All ENSO events (no restrictions on intensity) during the hindcasting period are selected for analysis.

Modelling methods. Cross validation⁵⁴ is employed in the modelling process.

Holdout Method: Holdout (simple) validation⁵⁵ relies on a single partitioning of the data. The whole time series is divided into two parts: the period from January 1970 to December 1999 is the training period and the period from January 2000 to December 2016 is the hindcasting period.

With a single predictor variable, the linear regression of the predictor variable x three months earlier on the dependent variable z during the training period is used to construct the model. We obtain the regression coefficient c and constant g . Thus, the forecast model can be written as

$$z_i = f_i(x) = cx_{i-3} + g \quad (6)$$

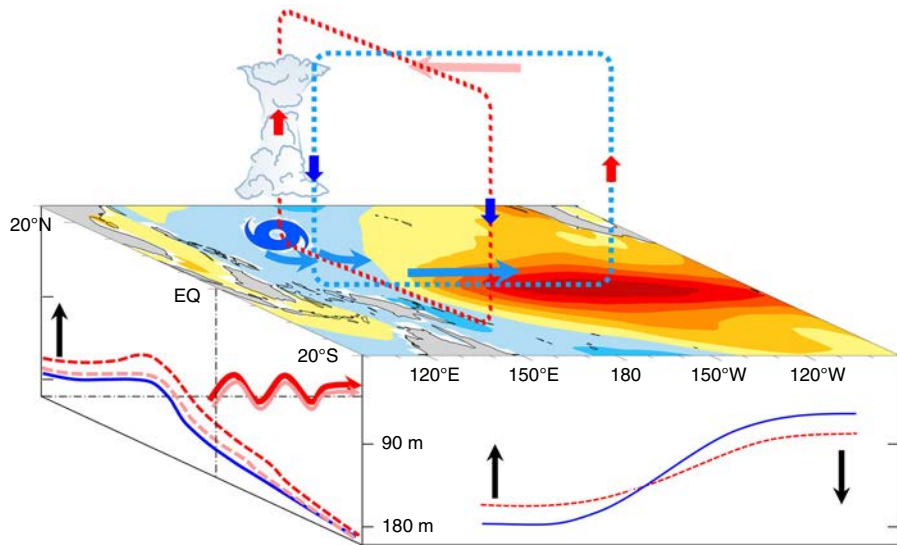


Fig. 10 Schematic diagram of the modulation of running 3-month mean SST intensity for the Niño 3.4 region (5°N–5°S, 120°–170°W) by tropical cyclones (TCs) over the western North Pacific. Walker circulation (light blue circle) is weakened by the direct effect of asymmetrically anomalous westerlies within 0°–10°N (light blue thick arrows) related with TCs (TC symbol) at lower tropospheric levels and by the indirect effect of the Hadley-like circulation (red circle) over the tropical western Pacific. Red (blue) heavy arrows indicate updrafts (downdrafts). Moreover, TCs can shallow the thermocline (red dashed curve) in the tropical western Pacific (pink curve indicates the thermocline without TCs and blue solid line the climatological thermocline). Enhanced eastward-propagating equatorial Kelvin waves (red wavy arrow, pink wavy arrow indicates the Kelvin wave without TCs) carries warm water eastward, further deepening the thermocline in the tropical eastern Pacific, thereby reducing the gradient of the zonal thermocline in the equatorial Pacific Ocean. Both effects intensify (weaken) the El Niño (La Niña). Black arrows represent the changing direction of the thermocline

where $f_i(x)$ is a function fitted to the predictor variable x . This gives us the relation between the dependent variable z at the i^{th} month and the predictor variable x at $(i-3)^{\text{th}}$ month (x_{i-3}) during the hindcasting period.

With two predictor variables, binary regression of the predictor variables x and y 3 months earlier on the dependent variable z during the training period is used to construct the model. We obtain the regression coefficients c and d , and the constant g . Thus, the forecast model can be represented as

$$z_i = f_i(x, y) = cx_{i-3} + dy_{i-3} + g \quad (7)$$

where $f_i(x, y)$ is a function fitted to the predictor variables x and y . This gives us the dependent variable z at the i^{th} month related to predictor variables x and y at the $(i-3)^{\text{th}}$ month (x_{i-3} and y_{i-3}) during the hindcasting period.

The real predictor variables used here are the standardized ACE anomalies (ACE^*) and standardized N3.4 ($N3.4^*$) three months earlier, and the dependent variable is N3.4. Because the key domain of the ACE three months before for N3.4 varies with the type of ENSO event (key domain is 10°–20°N, 135°–170°E during an El Niño event, 10°–25°N, 130°–155°E during a La Niña event, and a common domain of 10°–20°N, 135°–155°E during other periods), three models are constructed, one for each of the three areas, according to the 0.5°C anomaly of the preceding N3.4:

$$\begin{cases} N3.4_i = c_1 ACE_{i-3}^* + g_1, N3.4_{i-3} \geq 0.5, ACE(10^\circ - 20^\circ N, 135^\circ - 170^\circ E) \\ N3.4_i = c_2 ACE_{i-3}^* + g_2, |N3.4_{i-3}| < 0.5, ACE(10^\circ - 20^\circ N, 135^\circ - 155^\circ E) \\ N3.4_i = c_3 ACE_{i-3}^* + g_3, N3.4_{i-3} \leq -0.5, ACE(10^\circ - 25^\circ N, 130^\circ - 155^\circ E) \end{cases} \quad (8)$$

where $N3.4_i$ is N3.4 at the i^{th} month, ACE_{i-3}^* the standardized ACE anomalies at the $(i-3)^{\text{th}}$ month, and c_1, c_2, c_3 and g_1, g_2, g_3 are the regression coefficients and constants. Similarly, three ACE + N3.4 models are built, as follows:

$$\begin{cases} N3.4_i = c_4 ACE_{i-3}^* + d_1 N3.4_{i-3}^* + g_4, N3.4_{i-3} \geq 0.5, ACE(10^\circ - 20^\circ N, 135^\circ - 170^\circ E) \\ N3.4_i = c_5 ACE_{i-3}^* + d_2 N3.4_{i-3}^* + g_5, |N3.4_{i-3}| < 0.5, ACE(10^\circ - 20^\circ N, 135^\circ - 155^\circ E) \\ N3.4_i = c_6 ACE_{i-3}^* + d_3 N3.4_{i-3}^* + g_6, N3.4_{i-3} \leq -0.5, ACE(10^\circ - 25^\circ N, 130^\circ - 155^\circ E) \end{cases} \quad (9)$$

Where $N3.4_{i-3}^*$ is the standardized N3.4 at the $(i-3)^{\text{th}}$ month, and $c_4, c_5, c_6, d_1, d_2, d_3$ and g_4, g_5, g_6 are the regression coefficients and constants.

Correction to the ACE + N3.4 model: Analysis shows that the role of ACE is reduced in the ACE + N3.4 model owing to the persistence of SST, especially in the development stage of ENSO. To reduce this error, the ACE + N3.4 model is corrected using generalized cross-validation (GCV)⁵⁶. In this case, leave-one-out cross-validation (LOO-CV)^{57,58} is employed. A brief description of the methodology is as follows.

Step 1. For a given time series with length L , one time point is chosen to be a hindcasting point, and the rest of the time series (length: $L-1$) is used to construct the forecast model with regression analysis.

Step 2. Repeat step 1; i.e. choose another time point to be a new hindcasting point, resample the residuals, and obtain a new forecast model. Repeat this process for each time point of the given time series. This will result in the ensemble hindcast.

This method will provide a new ensemble hindcast of N3.4 using the predictor variables ACE^* and $N3.4^*$. The new ensemble hindcast of N3.4 produced by LOO-CV is mainly affected by the persistence of SST. Hence, by comparing this ensemble hindcast with the observations during the training period, we can obtain the correction ε_1 that will be used to correct the ACE + N3.4 models. And in this study, ε_1 depends on the base period. Because the effect of TCs on N3.4 varies with ENSO development, the whole N3.4 series is divided into four cases to obtain a more exact forecast: Case A, $N3.4_{i-3} \geq N3.4_{i-4}$ and $N3.4_{i-3} \geq 0$; Case B, $N3.4_{i-3} \geq N3.4_{i-4}$ and $N3.4_{i-3} < 0$; Case C, $N3.4_{i-3} < N3.4_{i-4}$ and $N3.4_{i-3} \geq 0$; Case D, $N3.4_{i-3} < N3.4_{i-4}$ and $N3.4_{i-3} < 0$. Then, four different corrected values (ε_2) are obtained for the four cases during the training period. Thus, the ACE + N3.4 model is built as follows:

$$\begin{cases} N3.4_i = c_4 ACE_{i-3}^* + d_1 N3.4_{i-3}^* + g_4 + \varepsilon, N3.4_{i-3} \geq 0.5, ACE(10^\circ - 20^\circ N, 135^\circ - 170^\circ E) \\ N3.4_i = c_5 ACE_{i-3}^* + d_2 N3.4_{i-3}^* + g_5 + \varepsilon, |N3.4_{i-3}| < 0.5, ACE(10^\circ - 20^\circ N, 135^\circ - 155^\circ E) \\ N3.4_i = c_6 ACE_{i-3}^* + d_3 N3.4_{i-3}^* + g_6 + \varepsilon, N3.4_{i-3} \leq -0.5, ACE(10^\circ - 25^\circ N, 130^\circ - 155^\circ E) \end{cases} \quad (10)$$

where ε depends on the case, $\varepsilon = \varepsilon_1 + \varepsilon_2$.

Running holdout method: This method only differs from the holdout method in its use of a variable-length training period that changes with the hindcasting time point. That is, the required set of regression coefficients and constants is based on the time series before each hindcasting target point. The base period is the shortest training period. Other processes are as described for the holdout method.

Leave-p-out Cross-Validation (LPO-CV): Leave-p-out is similar to LOO-CV, but the single time point is replaced by a time interval. A brief description of the methodology is as follows.

Step 1. A given time series with length L is divided into time intervals of length m . If L is not exactly divisible by m , we suppose that the whole time series can be divided into n parts and some ($< m$) remainder time points that cannot be used as the hindcasting object.

Step 2. One part is chosen to be a hindcasting object, and the rest of the time series (length: $L-m$) is used to construct a forecast model according to regression analysis.

Step 3. Repeat step 2, using another part as a new hindcasting object, resample the residuals, and obtain a new forecast model. Repeat this process n times. This will result in the ensemble hindcast without remainders.

Step 4. Compare the ensemble hindcast with the corresponding observations, and obtain correlation coefficients and root mean square errors. Then, change the value of m , repeat the above steps, and obtain a new ensemble hindcast.

To facilitate modelling, the start of the first time interval is 1970.04.

Lead time. In the model comparison, the lead time is defined by the number of months difference between the latest available observed data and the middle of the running 3-month hindcasting target period. For example, if the latest available observed data are through January, a prediction for the January–March season has a lead time of 1 month, and for February–April a lead of 2 months. Hence, in our research we mainly compare model hindcasting results at a lead of 2 months. Typically, new predictions become available one to two weeks following the last available month of observed data¹⁴.

Other concepts. Sign consistency: ratio of the number of months in which the anomaly sign is predicted correctly to the total number of months.

Model's relative advantage:

$$\text{relative advantage}_{\text{model A} \rightarrow \text{model B}} = |\text{Model A} - \text{Observation}| - |\text{Model B} - \text{Observation}|$$

Data availability

Maximum sustained surface winds and locations of TCs in the period 1970–2016 over the WNP are obtained from the International Best Track Archive for Climate Stewardship (IBTrACS; available online at <https://www.ncdc.noaa.gov/ibtracs/>) from the National Oceanic and Atmospheric Administration (NOAA). Monthly and daily mean wind fields for the period 1970–2016 from the National Centers for Environmental Prediction–National Center for Atmospheric Research (NCEP–NCAR) reanalysis dataset⁵⁹, on $2.5^\circ \times 2.5^\circ$ global grids, are also used (available online at <https://www.esrl.noaa.gov/psd/data/gridded/data.ncep.reanalysis.derived.html>). Monthly SST data from 1970 to 2016 with a horizontal resolution of $2^\circ \times 2^\circ$ are from the Extended Reconstructed Sea Surface Temperature (ERSST) V5 dataset⁶⁰ (available online at <https://www.esrl.noaa.gov/psd/data/gridded/data.noaa.ersst.v5.html>), with a horizontal resolution of $2^\circ \times 2^\circ$. The interpolated outgoing longwave radiation (OLR) data from NOAA for the period 1979–2016 are employed (available online at https://www.esrl.noaa.gov/psd/data/gridded/data.interp_OLR.html). The Simple Ocean Data Assimilation product (SODA 2.2.4) for the period 1970–2010 with $0.5^\circ \times 0.5^\circ$ horizontal resolution is also employed⁶¹ (available online at http://apdrc.soest.hawaii.edu/datadoc/soda_2.2.4.php). An ocean dataset (BOA_Argo⁶²) from the China Argo Real-time Data Center is employed (available online at <http://www.argo.org.cn/index.php?m=content&c=index&f=lists&catid=32>). The multi-model ENSO forecast data for the period 2002–2016 are from the International Research Institute for Climate and Society provided by Columbia University (IRI, available online at <http://iri.columbia.edu/~forecast/ensofcst/Data/>).

Code availability

Computer code used for the analysis was written in NCL, all types of figures that occur in this study can be found in NCL application examples (available online at <https://www.ncl.ucar.edu/Applications/>). More specific codes in this study are available to readers upon request.

Received: 12 September 2018 Accepted: 30 July 2019

Published online: 22 August 2019

References

- Bjerknes, J. Atmospheric teleconnections from the equatorial Pacific. *Mon. Wea. Rev.* **97**, 163–172 (1969).
- Jin, F.-F. Tropical ocean–atmosphere interaction, the Pacific cold tongue, and the El Niño Southern Oscillation. *Science* **274**, 76–78 (1996).
- Sun, C., Li, J. P. & Ding, R. Q. Strengthening relationship between ENSO and western Russian summer surface temperature. *Geophys. Res. Lett.* **43**, 843–851 (2016).
- Zhang, W. J., Li, H. Y., Stuecker, M. F., Jin, F.-F. & Turner, A. G. A new understanding of El Niño's impact over East Asia: Dominance of the ENSO combination mode. *J. Clim.* **29**, 4347–4359 (2016).
- Giese, B. S. & Harrison, D. E. Eastern equatorial Pacific response to 3 composite westerly wind types. *J. Geophys. Res.* **96**, 3239–3248 (1991).
- Harrison, D. E. & Vecchi, G. A. Westerly wind events in the tropical Pacific, 1986–95. *J. Clim.* **10**, 3131–3156 (1997).
- Lian, T., Chen, D. K., Tang, Y. M. & Wu, Q. Y. Effects of westerly wind bursts on El Niño: A new perspective. *Geophys. Res. Lett.* **41**, 3522–3527 (2014).
- Moore, A. M. & Kleeman, R. Stochastic forcing of ENSO by the intraseasonal oscillation. *J. Clim.* **12**, 1199–1220 (1999).
- Wang, B., Barcilon, A. & Fang, Z. Stochastic dynamics of El Niño–Southern Oscillation. *J. Atmos. Sci.* **56**, 5–23 (1999).
- Hu, Z. Z., Kumar, A., Zhu, J. S., Peng, P. T. & Huang, B. H. On the challenge for ENSO cycle prediction: an example from NCEP climate forecast system, Version 2. *J. Clim.* **32**, 183–194 (2019).
- Chen, D., Cane, M. A., Kaplan, A., Zebiak, S. E. & Huang, D. J. Predictability of El Niño over the past 148 years. *Nature* **428**, 733–736 (2004).
- Fedorov, A. V., Harper, S. L., Philander, S. G., Winter, B. & Wittenberg, A. How predictable is El Niño? *Bull. Am. Meteorol. Soc.* **84**, 911–919 (2003).
- Wang, C. Z., Deser, C., Yu, J.-Y., Dinezio, P. & Clement, A. in *Coral reefs of the eastern Pacific* (eds Glynn P., Manzello D., & Enochs I.) 85–106 (Springer Science Publisher, Dordrecht, 2016).
- Barnston, A. G., Tippet, M. K., L'Heureux, M. L., Li, S. H. & DeWitt, D. G. Skill of real-time seasonal ENSO model predictions during 2002–11 is our capability increasing? *Bull. Am. Meteorol. Soc.* **93**, 631–651 (2012).
- Emanuel, K. Increasing destructiveness of tropical cyclones over the past 30 years. *Nature* **436**, 686–688 (2005).
- Webster, P. J., Holland, G. J., Curry, J. A. & Chang, H. R. Changes in tropical cyclone number, duration, and intensity in a warming environment. *Science* **309**, 1844–1846 (2005).
- Li, J. P., Swinbank, R., Grotjahn, R. & Volkert, H. *Dynamics and predictability of large-scale high-impact weather and climate events*. (Cambridge University Press, United Kingdom, 2016). <http://www.cambridge.org/9781107071421>.
- Gray, W. M. Global view of origin of tropical disturbances and storms. *Mon. Wea. Rev.* **96**, 669–700 (1968).
- Emanuel, K. Tropical cyclones. *Annu. Rev. Earth Pl. Sc.* **31**, 75–104 (2003).
- Camargo, S. J., Robertson, A. W., Barnston, A. G. & Ghil, M. Clustering of eastern North Pacific tropical cyclone tracks: ENSO and MJO effects. *Geophys. Res. Lett.* **35**, Q06V05 (2008).
- Knutson, T. R. et al. Tropical cyclones and climate change. *Nat. Geosci.* **3**, 157–163 (2010).
- Wang, Q. Y., Li, J. P., Li, Y. J., Zhang, J. W. & Zheng, J. Y. Modulation of tropical cyclogenesis location and frequency over the Indo-western North Pacific by the intraseasonal Indo-western Pacific convection oscillation during the boreal extended summer. *J. Clim.* **31**, 1435–1450 (2018).
- Zhan, R. F., Wang, Y. Q. & Liu, Q. Y. Salient Differences in tropical cyclone activity over the western North Pacific between 1998 and 2016. *J. Clim.* **30**, 9979–9997 (2017).
- Chan, J. C. L. Tropical cyclone activity in the northwest Pacific in relation to the El-Niño Southern Oscillation phenomenon. *Mon. Wea. Rev.* **113**, 599–606 (1985).
- Pudov, V. D. & Petrichenko, S. A. Relation between the tropical cyclone evolution in the Northwestern Pacific and El Niño. *Okeanologiya* **38**, 496–501 (1998).
- Wang, B. & Chan, J. C. L. How strong ENSO events affect tropical storm activity over the Western North Pacific. *J. Clim.* **15**, 1643–1658 (2002).
- Chia, H. H. & Ropelewski, C. F. The interannual variability in the genesis location of tropical cyclones in the northwest Pacific. *J. Clim.* **15**, 2934–2944 (2002).
- Jin, F.-F., Boucharel, J. & Lin, I. I. Eastern Pacific tropical cyclones intensified by El Niño delivery of subsurface ocean heat. *Nature* **516**, 82–85 (2014).
- Wang, C. Z., Weisberg, R. H. & Virmani, J. I. Western Pacific interannual variability associated with the El Niño Southern oscillation. *J. Geophys. Res.* **104**, 5131–5149 (1999).
- Wang, C. Z., Li, C. X., Mu, M. & Duan, W. S. Seasonal modulations of different impacts of two types of ENSO events on tropical cyclone activity in the western North Pacific. *Clim. Dyn.* **40**, 2887–2902 (2013).
- Fedorov, A. V., Brierley, C. M. & Emanuel, K. Tropical cyclones and permanent El Niño in the early Pliocene epoch. *Nature* **463**, 1066–1084 (2010).
- Bell, G. D. et al. Climate assessment for 1999. *Bull. Am. Meteorol. Soc.* **81**, S1–S50 (2000).
- Zebiak, S. E. & Cane, M. A. A model El-Niño Southern Oscillation. *Mon. Wea. Rev.* **115**, 2262–2278 (1987).
- Chan, J. C. L. & Liu, K. S. Global warming and western North Pacific typhoon activity from an observational perspective. *J. Clim.* **17**, 4590–4602 (2004).
- Keen, R. A. The role of cross-equatorial tropical cyclone pairs in the Southern Oscillation. *Mon. Wea. Rev.* **110**, 1405–1416 (1982).
- Striver, R. L., Huber, M. & Chafik, L. Excitation of equatorial Kelvin and Yanai waves by tropical cyclones in an ocean general circulation model. *Earth Syst. Dynam.* **4**, 1–10 (2013).
- Li, H. & Striver, R. L. Effects of ocean grid resolution on tropical cyclone-induced upper ocean responses using a global ocean general circulation model. *J. Geophys. Res.* **121**, 8305–8319 (2016).
- Emanuel, K. Contribution of tropical cyclones to meridional heat transport by the oceans. *J. Geophys. Res.* **106**, 14771–14781 (2001).
- Striver, R. L. & Huber, M. Observational evidence for an ocean heat pump induced by tropical cyclones. *Nature* **447**, 577–580 (2007).
- Price, J. F., Morzel, J. & Niiler, P. P. Warming of SST in the cool wake of a moving hurricane. *J. Geophys. Res.* **113**, C07010 (2008).

41. Pasquero, C. & Emanuel, K. Tropical cyclones and transient upper-ocean warming. *J. Clim.* **21**, 149–162 (2008).
42. Buetti, M. R., Ginis, I., Rothstein, L. M. & Griffies, S. M. Tropical cyclone-induced thermocline warming and its regional and global impacts. *J. Clim.* **27**, 6978–6999 (2014).
43. McPhaden, M. J. Genesis and evolution of the 1997–98 El Niño. *Science* **283**, 950–954 (1999).
44. Puy, M., Vialard, J., Lengaigne, M. & Guilyardi, E. Modulation of equatorial Pacific westerly/easterly wind events by the Madden-Julian oscillation and convectively-coupled Rossby waves. *Clim. Dyn.* **46**, 2155–2178 (2016).
45. Chen, D. K. et al. Strong influence of westerly wind bursts on El Niño diversity. *Nat. Geosci.* **8**, 339–345 (2015).
46. Camargo, S. J. & Sobel, A. H. Western North Pacific tropical cyclone intensity and ENSO. *J. Clim.* **18**, 2996–3006 (2005).
47. Pyper, B. J. & Peterman, R. M. Comparison of methods to account for autocorrelation in correlation analyses of fish data. *Can. J. Fish. Aquat. Sci.* **55**, 2127–2140 (1998).
48. Li, J. P., Sun, C. & Jin, F.-F. NAO implicated as a predictor of Northern Hemisphere mean temperature multidecadal variability. *Geophys. Res. Lett.* **40**, 5497–5502 (2013).
49. Xie, F., Li, J. P., Tian, W. S., Zhang, J. K. & Sun, C. The relative impacts of El Niño Modoki, canonical El Niño, and QBO on tropical ozone changes since the 1980s. *Environ. Res. Lett.* **9**, 064020 (2014).
50. Sun, C., Li, J. P., Feng, J. & Xie, F. A decadal-scale teleconnection between the North Atlantic Oscillation and subtropical eastern Australian rainfall. *J. Clim.* **28**, 1074–1092 (2015).
51. Wang, Q. Y. et al. Modulation of tropical cyclone tracks over the western North Pacific by intra-seasonal Indo-western Pacific convection oscillation during the boreal extended summer. *Clim. Dyn.* **52**, 913–927 (2019).
52. Wheeler, M. C. & Hendon, H. H. An all-season real-time multivariate MJO index: development of an index for monitoring and prediction. *Mon. Wea. Rev.* **132**, 1917–1932 (2004).
53. Zhao, H. K., Yoshida, R. & Raga, G. B. Impact of the Madden-Julian Oscillation on western North Pacific tropical cyclogenesis associated with large-scale patterns. *J. Appl. Meteorol. Clim.* **54**, 1413–1429 (2015).
54. Michaelsen, J. Cross-validation in statistical climate forecast models. *J. Clim. Appl. Meteor.* **26**, 1589–1600 (1987).
55. Devroye, L. P. & Wagner, T. J. Distribution-free performance bounds for potential function rules. *IEEE Trans. Inform. Theory* **25**, 601–604 (1979).
56. Geisser, S. The predictive sample reuse method with applications. *J. Amer. Statist. Assoc.* <https://doi.org/10.1080/01621459.1975.10479865> (1975).
57. Grantz, K., Rajagopalan, B., Clark, M. & Zagona, E. A technique for incorporating large-scale climate information in basin-scale ensemble streamflow forecasts. *Water Resour. Res.* **41**, W10410 (2005).
58. Regonda, S. K., Rajagopalan, B., Clark, M. & Zagona, E. A multimodel ensemble forecast framework: application to spring seasonal flows in the Gunnison River Basin. *Water Resour. Res.* **42**, W09404 (2006).
59. Kalnay, E. et al. The NCEP/NCAR 40-year reanalysis project. *Bull. Am. Meteorol. Soc.* **77**, 437–471 (1996).
60. Huang, B. Y. et al. Extended reconstructed sea surface temperature, version 5 (ERSSTv5): Upgrades, validations, and intercomparisons. *J. Clim.* **30**, 8179–8205 (2017).
61. Carton, J. A. & Giese, B. S. A reanalysis of ocean climate using Simple Ocean Data Assimilation (SODA). *Mon. Wea. Rev.* **136**, 2999–3017 (2008).
62. Lu, S. et al. User manual of global ocean Argo gridded datasets (BOA_Argo). ftp://data.argo.org.cn/pub/ARGO/BOA_Argo/BOA_Argo_readme_CN_2018.pdf (2018).

Acknowledgements

The authors are deeply indebted to Yuehong Wang, Zhaolu Hou, Jiaqing Xue, Yazhou Zhang and Qianjia Zhong for their helpful comments and suggestions. This work was jointly supported by the National Natural Science Foundation of China (NSFC, 41530424) project and State Oceanic Administration (SOA) International Cooperation Program on Global Change and Air–Sea Interactions (GASI-IPOVAI-03). C.Z.W. acknowledges the support from NSFC (41731173), the Leading Talents of Guangdong Province Program, the Pioneer Hundred Talents Program of the Chinese Academy of Sciences, the Strategic Priority Research Program of the Chinese Academy of Sciences (XDA20060502) and the National Program on Global Change and Air–Sea Interaction (GASI-IPOVAI-04).

Author contributions

J.P.L. and Q.Y.W. contributed equally to the original idea and writing in this paper. Q.Y.W., J.P.L., F.-F.J., J.C.L.C. and C.Z.W. discussed further analysis and interpreted the results. Q.Y.W., J.P.L., F.-F.J., J.C.L.C., C.Z.W., R.Q.D., C.S., F.Z., J.F., F.X., Y.J.L., F.L. and Y.D.X. contributed to improve the manuscript.

Additional information

Supplementary Information accompanies this paper at <https://doi.org/10.1038/s41467-019-11720-w>.

Competing interests: The authors declare no competing interests.

Reprints and permission information is available online at <http://npg.nature.com/reprintsandpermissions/>

Peer review information: *Nature Communications* thanks the anonymous reviewer(s) for their contribution to the peer review of this work. Peer reviewer reports are available.

Publisher's note: Springer Nature remains neutral with regard to jurisdictional claims in published maps and institutional affiliations.



Open Access This article is licensed under a Creative Commons Attribution 4.0 International License, which permits use, sharing, adaptation, distribution and reproduction in any medium or format, as long as you give appropriate credit to the original author(s) and the source, provide a link to the Creative Commons license, and indicate if changes were made. The images or other third party material in this article are included in the article's Creative Commons license, unless indicated otherwise in a credit line to the material. If material is not included in the article's Creative Commons license and your intended use is not permitted by statutory regulation or exceeds the permitted use, you will need to obtain permission directly from the copyright holder. To view a copy of this license, visit <http://creativecommons.org/licenses/by/4.0/>.

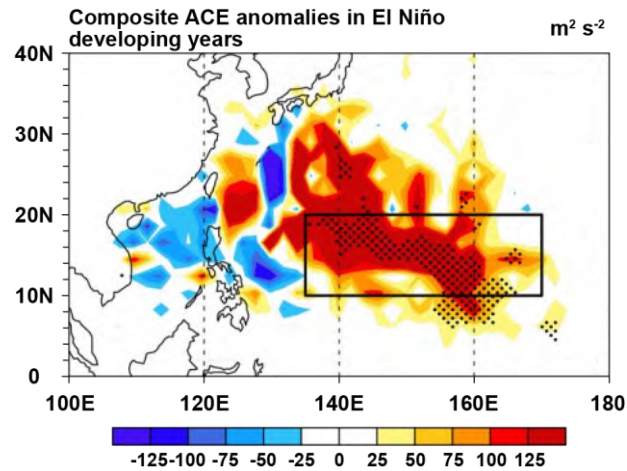
© The Author(s) 2019

Supplementary Information

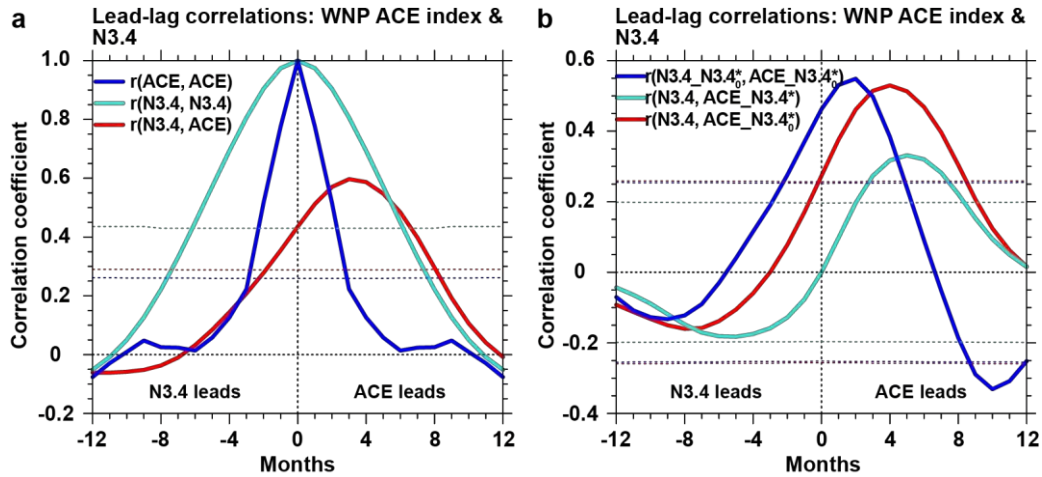
Tropical cyclones act to intensify El Niño

By Wang et al.

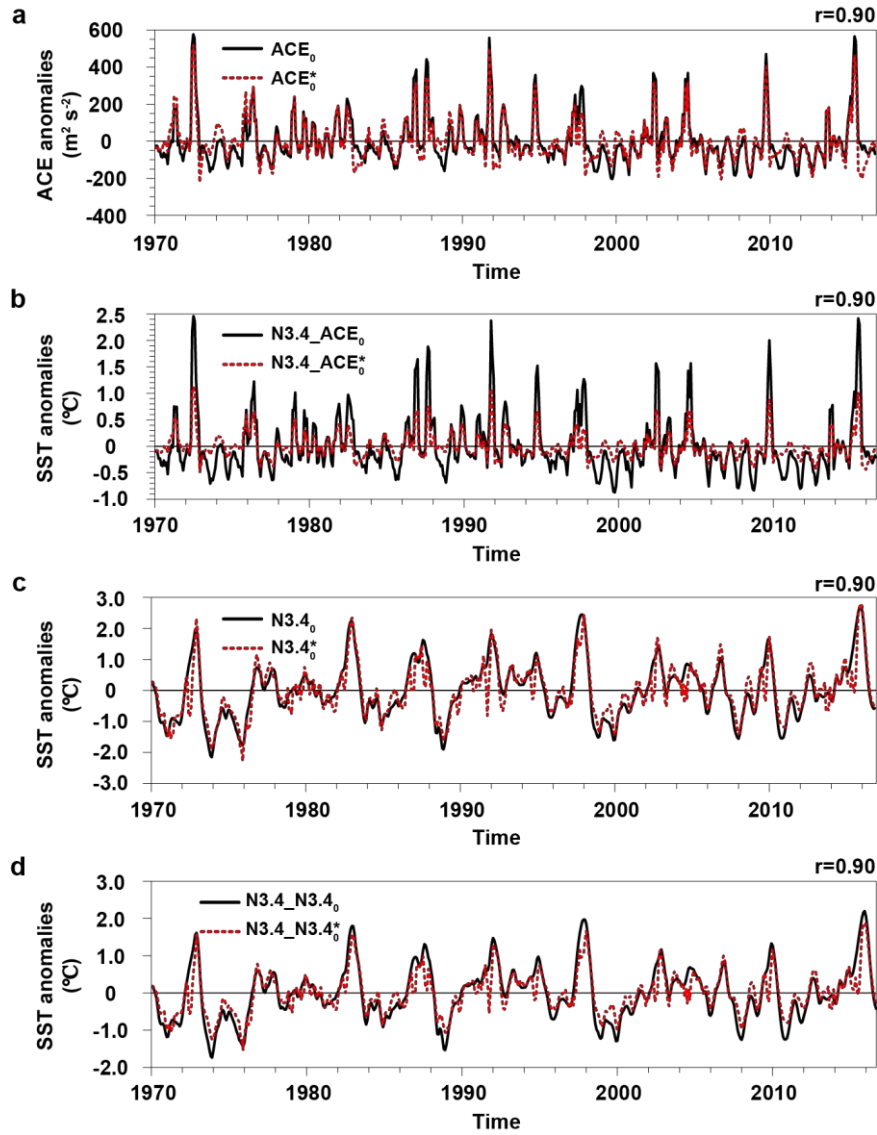
Supplementary Figures



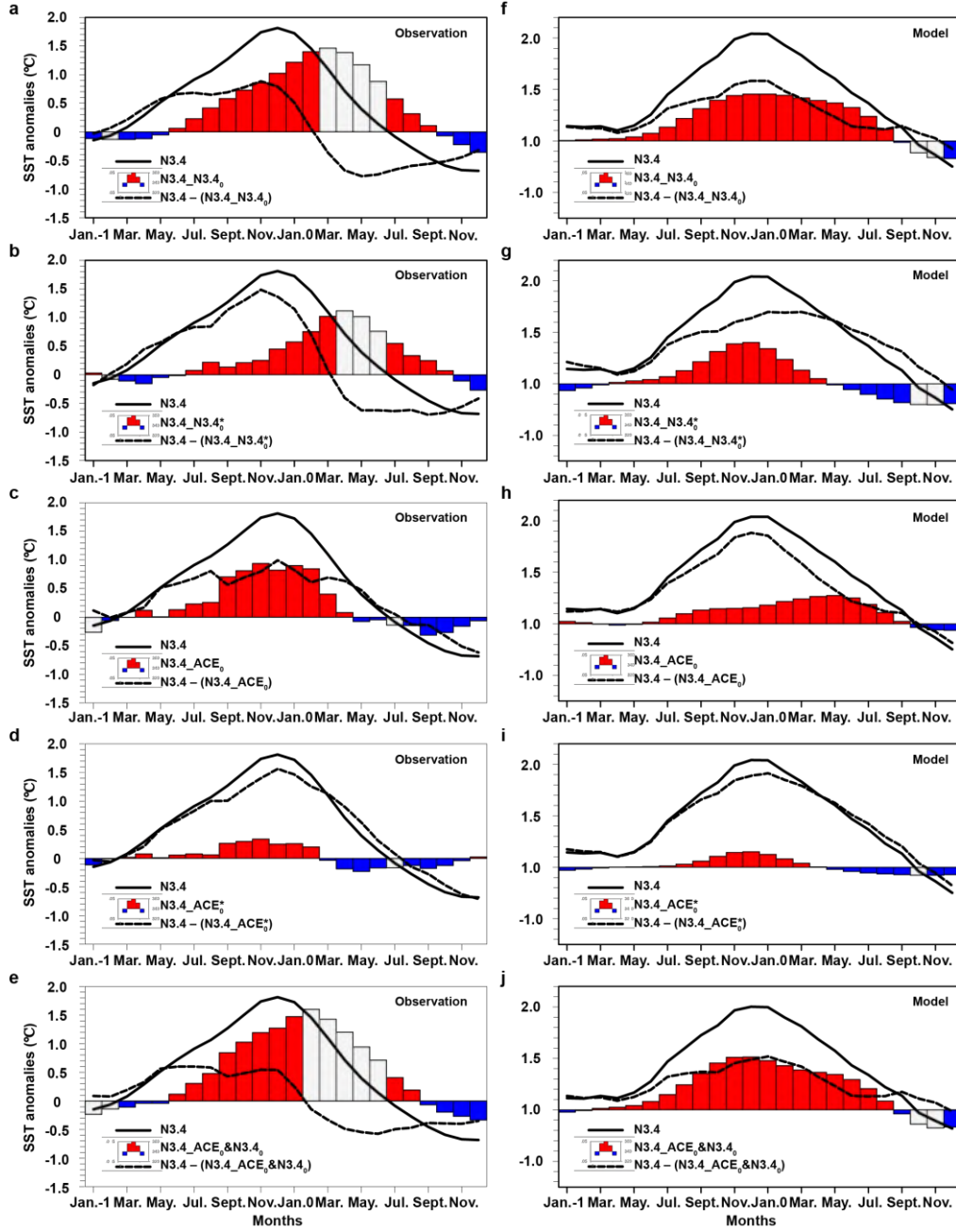
Supplementary Figure 1 Composite of the accumulated cyclone energy (ACE) anomalies (shading, $\text{m}^2 \text{s}^{-2}$) over the western North Pacific during the El Niño developing years (all months) from 1970 to 2016. An El Niño developing year is defined when the above-moderate El Niño events (including moderate events) develops from weak to strong. The stippled regions indicate significance above the 99% confidence level using Student's t -test. The black rectangle denotes the selected ACE region (10° – 20° N, 135° – 170° E).



Supplementary Figure 2 Lead–lag correlations between the accumulated cyclone energy (ACE) anomalies over the western North Pacific (10°–20°N, 135°–170°E; WNP) and the running 3-month mean SST anomaly for the Niño 3.4 region (5°N–5°S, 120°–170°W) (N3.4, an ENSO index) together with their autocorrelations in the period 1970–2016. a, Lead–lag correlation and autocorrelations between original series. The red, turquoise and blue dashed lines indicate significance at the 99% confidence level related to lead–lag correlations between the WNP ACE and N3.4 indices, and autocorrelations of the N3.4 and WNP ACE indices via Student’s *t*-test using the effective number of degrees of freedom, respectively. **b,** Lead–lag correlations between the processed series. N3.4_N3.4₀^{*} (ACE_N3.4₀^{*}) indicates the N3.4 (WNP ACE) not associated with the preceding (3 months earlier) N3.4. ACE_N3.4^{*} indicates the WNP ACE index not associated with the simultaneous N3.4. The red, turquoise and blue dashed lines indicate significance at the 99% confidence level related to lead–lag correlations between N3.4 and ACE_N3.4₀^{*}, N3.4 and ACE_N3.4^{*}, N3.4_N3.4₀^{*} and ACE_N3.4₀^{*} via Student’s *t*-test using the effective number of degrees of freedom, respectively.

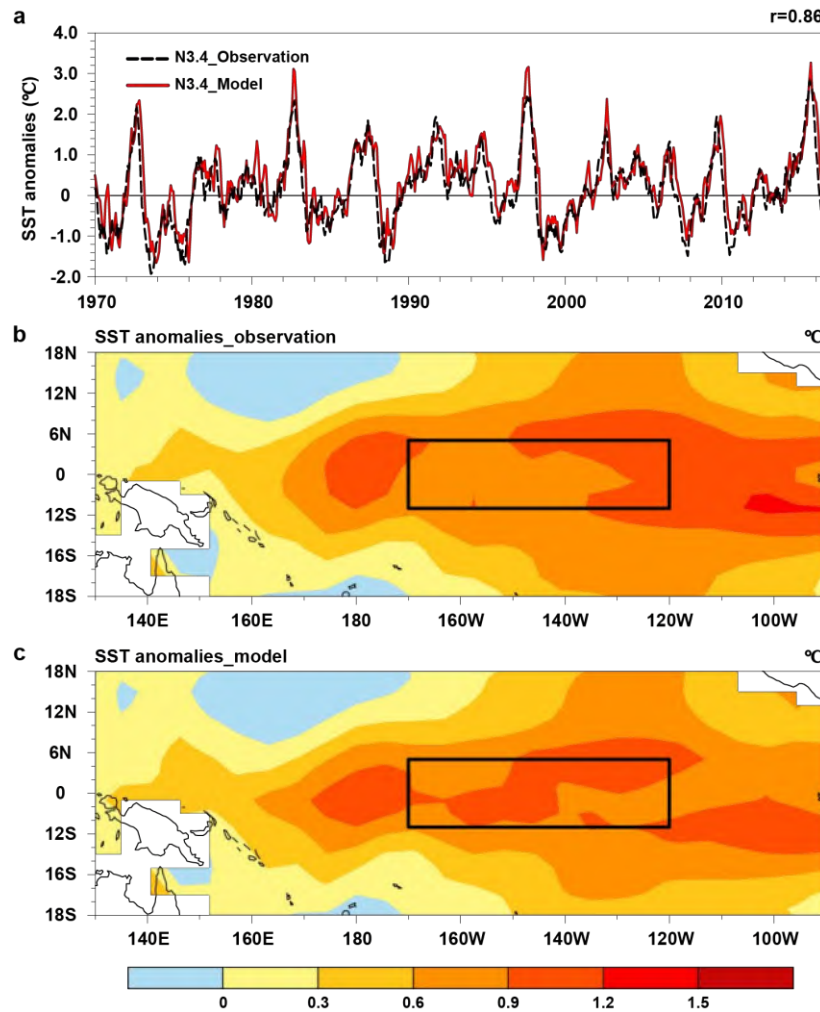


Supplementary Figure 3 Time series of the preceding (3 months earlier) accumulated cyclone energy (ACE) anomalies ($\text{m}^2 \text{s}^{-2}$) over the western North Pacific (10° – 20°N , 135° – 170°E ; WNP) and the running 3-month mean SST anomaly for the Niño 3.4 region (5°N – 5°S , 120° – 170°W) (N3.4, an ENSO index, $^{\circ}\text{C}$), and regressions onto the N3.4 from 1970 to 2016. **a**, Preceding ACE. ACE_0 denotes the original series, and ACE_0^* indicates the series not associated with the preceding N3.4. **b**, Regression on the N3.4. N3.4_ACE_0 denotes the regression of the preceding ACE index on the N3.4, and N3.4_ACE_0^* indicates the regression of the preceding ACE index not associated with the preceding N3.4 on the N3.4. **c**, Preceding N3.4. N3.4_0 denotes the original series, and N3.4_0^* indicates the series not associated with the preceding ACE index. **d**, Regression on the N3.4. N3.4_N3.4_0 denotes the regression of the preceding N3.4 on the N3.4, and N3.4_N3.4_0^* indicates the regression of the preceding N3.4 signal not associated with the preceding ACE on the N3.4. Here, r is the correlation coefficient.

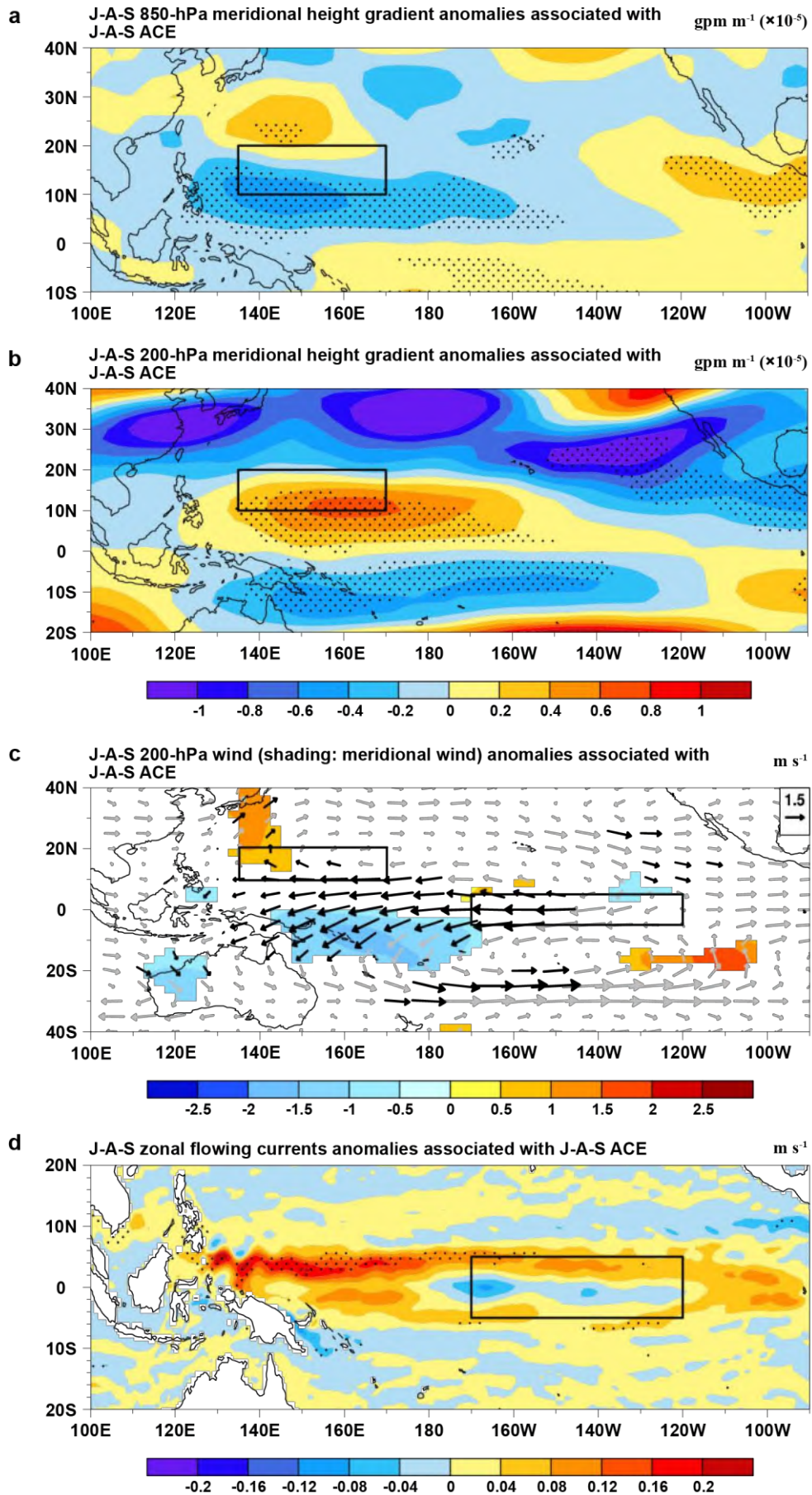


Supplementary Figure 4 Composite time series of the running 3-month mean SST anomaly for the Niño 3.4 region (5°N – 5°S , 120° – 170°W) (N3.4, an ENSO index, $^{\circ}\text{C}$) for the original (solid line) and preceding-contributor-independent (dashed line) above-moderate El Niño events (including moderate events), as well as the explained percentage (%) of Niño-3.4 intensity (bars) obtained using the preceding contributors' signal. ACE_0 & N3.4_0 represents the combined contribution of the preceding the accumulated cyclone energy (ACE) over the western North Pacific (10° – 20°N , 135° – 170°E ; WNP) and N3.4; N3.4_0 the preceding N3.4; ACE_0 the preceding WNP ACE; N3.4_0^* the preceding ACE-independent N3.4 (i.e., the preceding N3.4 after removing WNP ACE); and ACE_0^* the preceding N3.4-independent ACE index

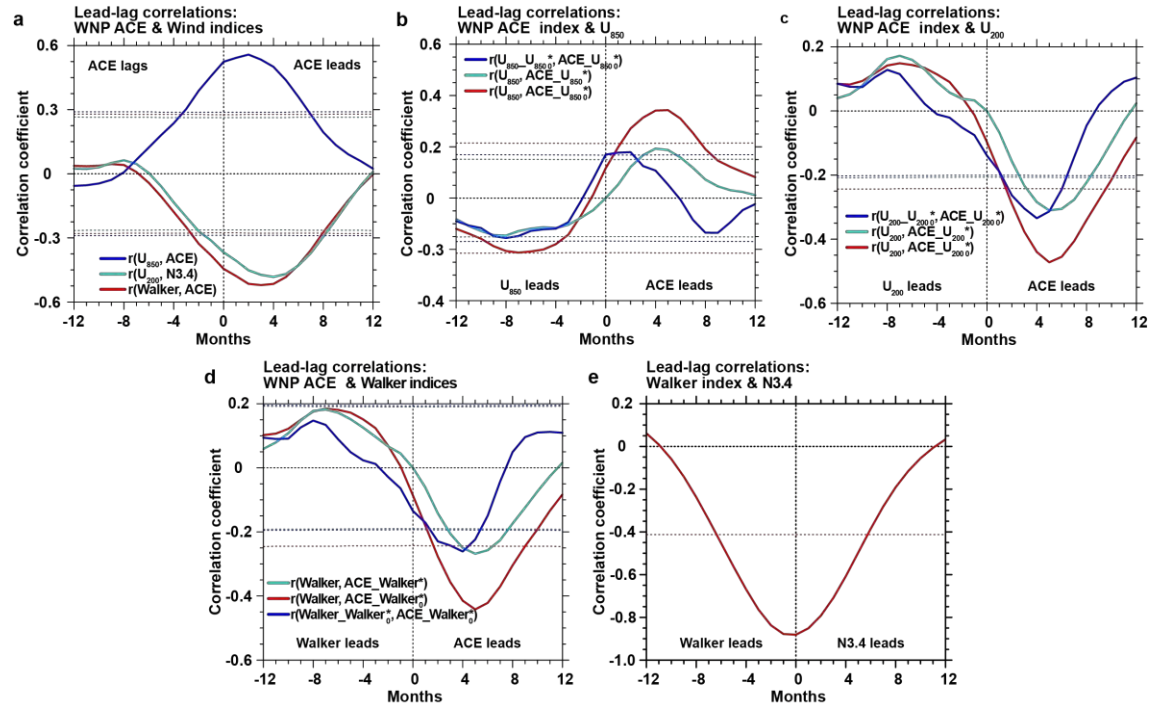
(i.e., the preceding WNP ACE after removing N3.4). **a–e**, Observations. **f–j**, As in **a–e**, but for the model results. Red (blue) bars represent the positive (negative) explained percentage of the preceding signals to the N3.4, and whitesmoke bars indicate the explained percentage of the preceding signals to the N3.4 with the sign of the N3.4 changing. Jan.-1 and Jan.0 represent the January in last year and the year concurring with El Niño, respectively.



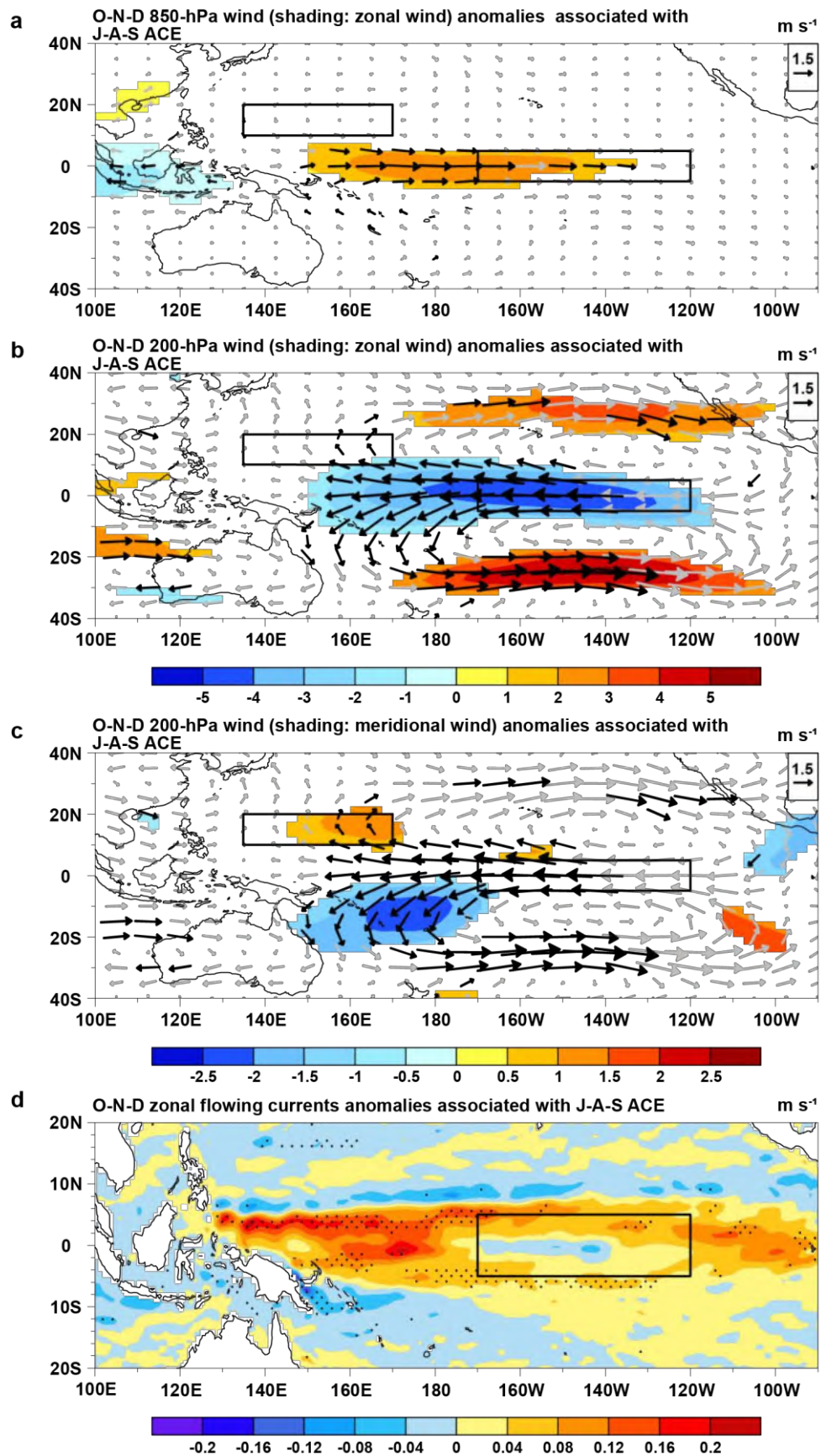
Supplementary Figure 5 Time series of the succeeding (3 months later) running 3-month mean SST anomaly for the Niño 3.4 region (5°N–5°S, 120°–170°W) (N3.4, an ENSO index, °C) from 1970 to 2016 and spatial distributions of sea-surface temperature anomalies (SST, shading, °C) during the El Niño developing years. a, Time series of the observed (red line) and predicted (black line) N3.4 from an intermediate-complexity coupled ocean–atmosphere model^{10,11}. r is the correlation coefficient; **b**, Observations; **c**, Predictions. The black rectangle denotes the selected the Niño-3.4 region (5°S–5°N, 120°–170°W). An El Niño developing year is defined when the above-moderate El Niño events (including moderate events) develops from weak to strong.



Supplementary Figure 6 Composite fields for each month from July to September associated with the simultaneous accumulated cyclone energy (ACE) anomalies over the western North Pacific (10°–20°N, 135°–170°E; WNP) during El Niño developing years (1970–2016). a, 850-hPa meridional geopotential height gradient anomalies ($\times 10^{-5}$, gpm m⁻¹). b, 200-hPa meridional geopotential height gradient anomalies ($\times 10^{-5}$, gpm m⁻¹). c, Meridional (shading, m s⁻¹) and horizontal 200-hPa wind anomalies (vectors, m s⁻¹). d, Zonal flowing currents (m s⁻¹) at a depth of 5 m. Shading and black vectors in c as well as the stippled regions in a, b, and d indicate significance above the 95% confidence level using Student's *t*-test. The black rectangles denote the selected ACE region (10°–20°N, 135°–170°E) and the Niño-3.4 region (5°S–5°N, 120°–170°W). An El Niño developing year is defined when the above-moderate El Niño events (including moderate events) develops from weak to strong.

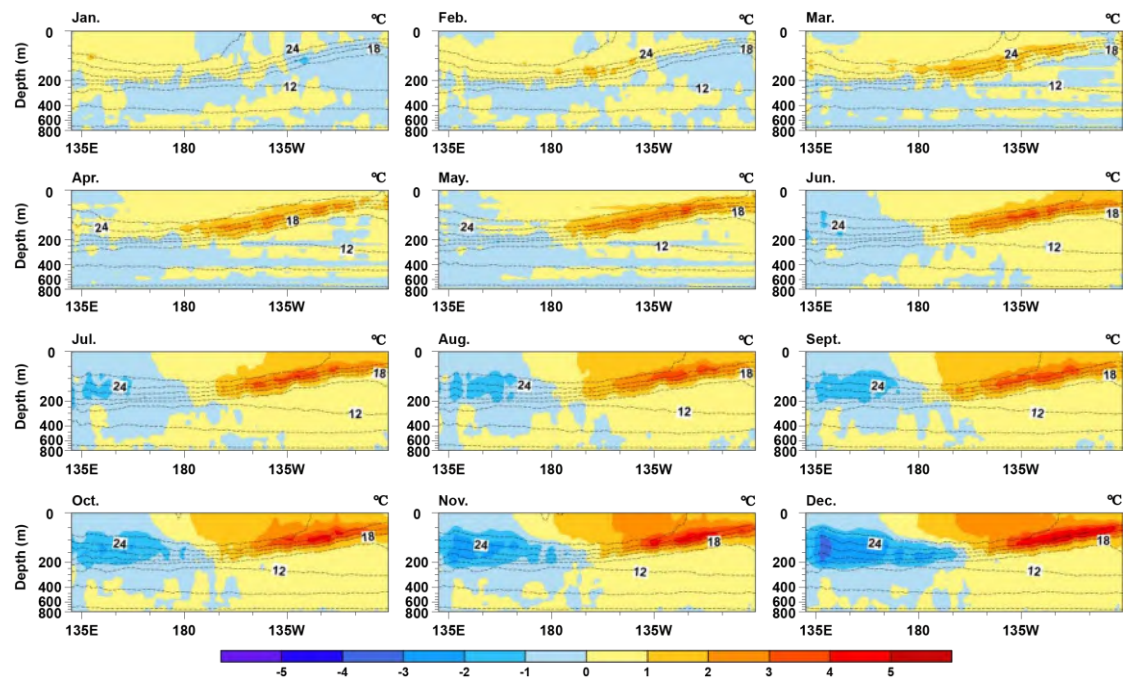


Supplementary Figure 7 Lead-lag correlations between the accumulated cyclone energy (ACE) anomalies over the western North Pacific (10°–20°N, 135°–170°E; WNP), wind (including the Walker index, zonal winds at 200 hPa (U_{200}) and 850 hPa (U_{850}), and the running 3-month mean SST anomaly for the Niño 3.4 region (5°N–5°S, 120°–170°W) (N3.4, an ENSO index) in the period 1970–2016. a, Lead-lag correlation between the WNP ACE and wind indices. The turquoise, red and blue lines indicate the 99% confidence levels related to lead-lag correlations between U_{200} and N3.4 indices, Walker and N3.4 indices, U_{850} and N3.4 indices via Student's t -test using the effective number of degrees of freedom, respectively. **b,** Lead-lag correlations between the processed ACE and U_{850} series. $U_{850}U_{850}^*$ ($ACE_U_{850}^*$) indicates the U_{850} (WNP ACE index) not associated with the preceding (3 months earlier) U_{850} . $ACE_U_{850}^*$ indicates the WNP ACE index not associated with the simultaneous U_{850} . The red, turquoise and blue dashed lines indicate significance at the 98% confidence level related to lead-lag correlations between U_{850} and $ACE_U_{850}^*$, U_{850} and $ACE_U_{850}^*$, $U_{850}U_{850}^*$ and $ACE_U_{850}^*$ via Student's t -test using the effective number of degrees of freedom, respectively. **c,** As in **b**, but for the processed ACE and U_{200} series. The red, turquoise and blue dashed lines indicate significance at the 99% confidence level. **d,** As in **c**, but for the processed ACE and Walker index series. **e,** As in **c**, but for the N3.4 and Walker indices.

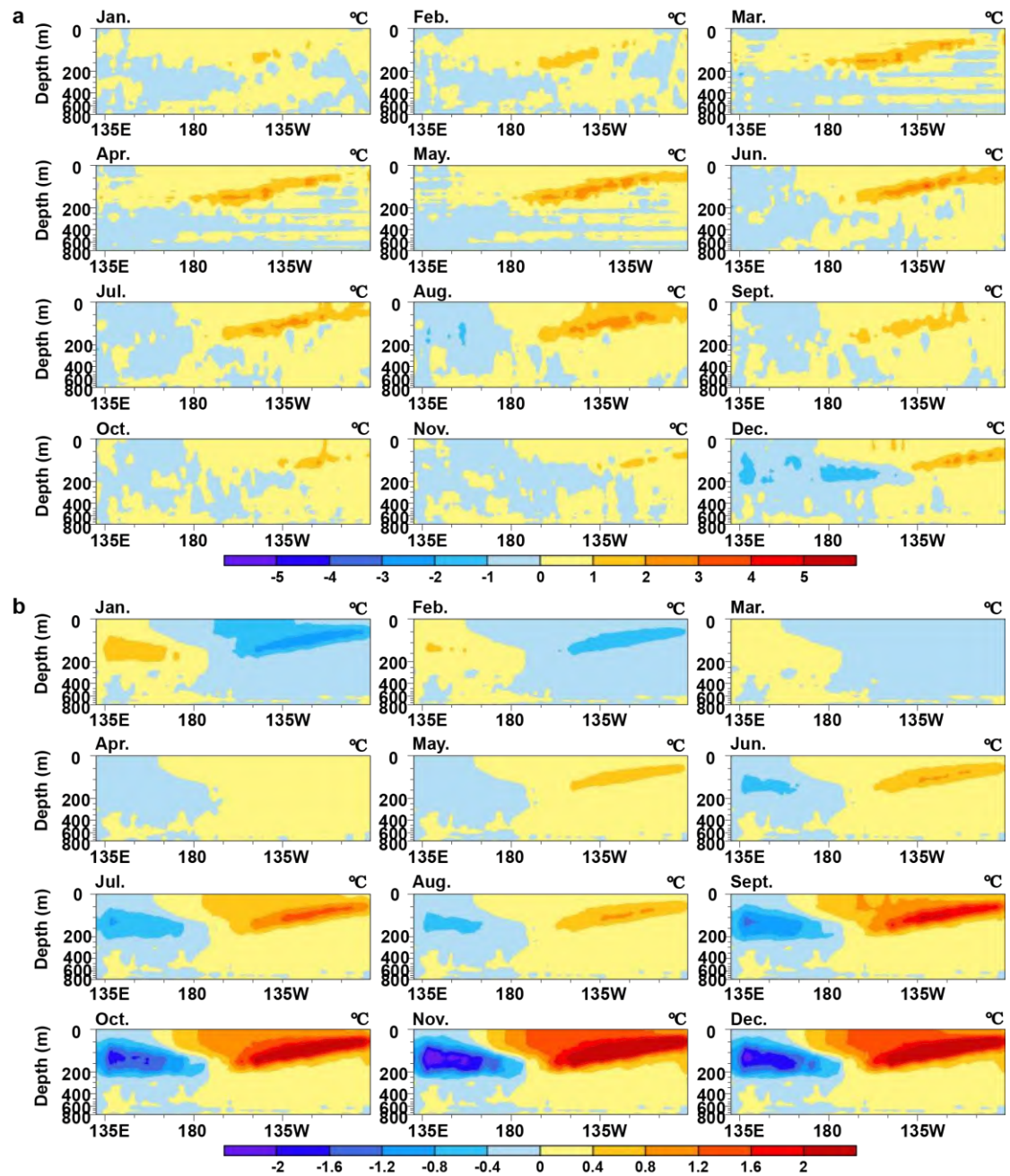


Supplementary Figure 8 Composite of fields in each month from October to December associated with the accumulated cyclone energy (ACE) anomalies over

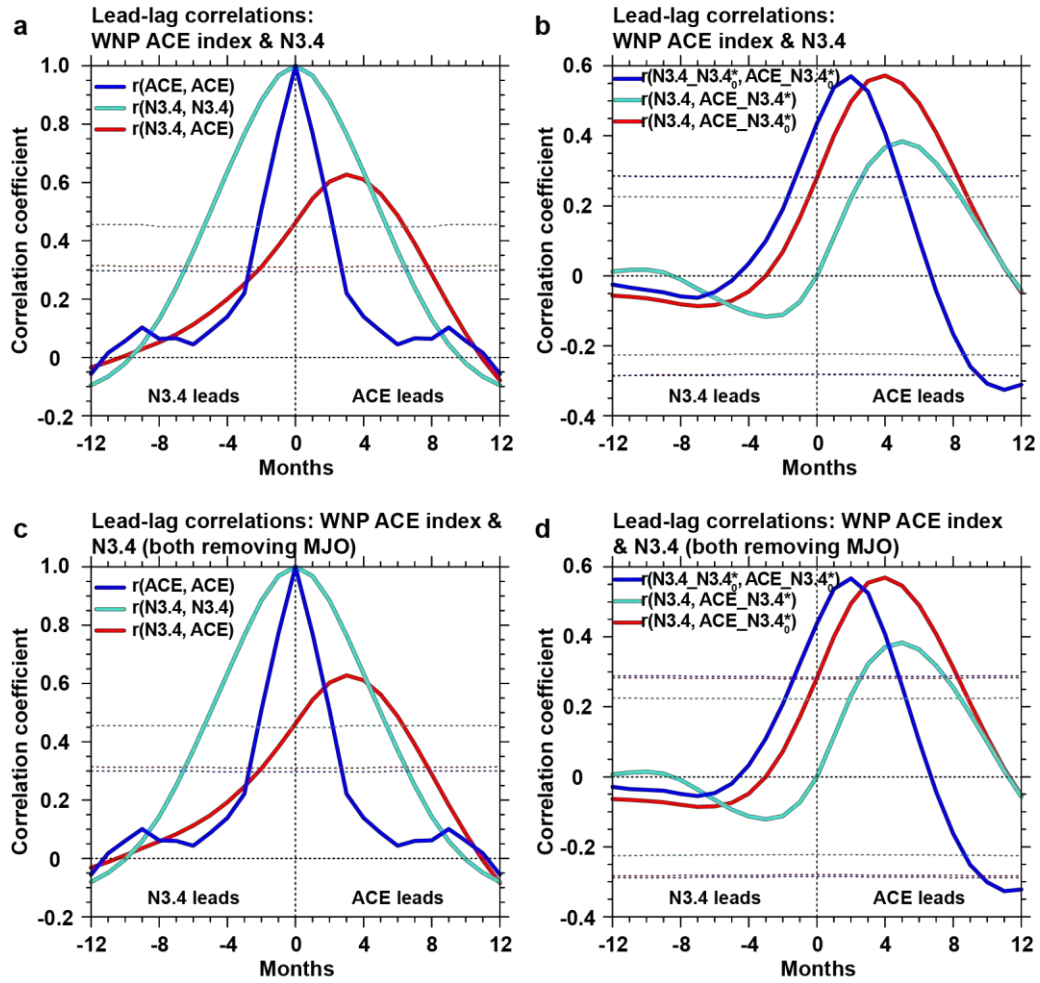
the western North Pacific (10°–20°N, 135°–170°E; WNP) from July to September during El Niño developing years (1970–2016). **a**, Zonal and horizontal 850-hPa wind anomalies (m s^{-1}). **b**, As in **a**, but for 200 hPa. **c**, Meridional and horizontal 200-hPa wind anomalies (m s^{-1}). **d**, Zonal flowing currents (m s^{-1}) at a depth of 5 m in the Pacific. Shading and black vectors in **a**, **b** and **c** as well as the stippled regions in **d** indicate significance above the 95% confidence level using Student's *t*-test. The black rectangles denote the selected ACE region (10°–20°N, 135°–170°E) and the Niño-3.4 region (5°S–5°N, 120°–170°W). An El Niño developing year is defined when the above-moderate El Niño events (including moderate events) develops from weak to strong.



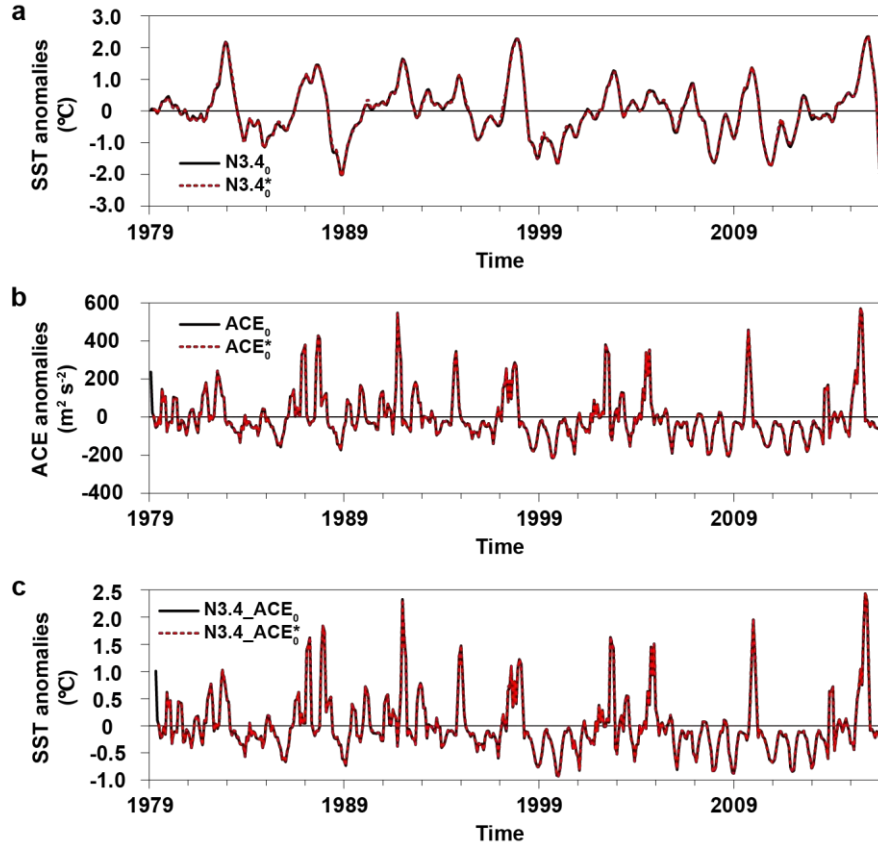
Supplementary Figure 9 Composite of the observational depth–zonal distributions of monthly equatorial potential temperature anomalies averaged between 5°S–5°N (shading; °C) during the El Niño developing years (2004–2016). An El Niño developing year is defined when the above-moderate El Niño events (including moderate events) develops from weak to strong. Dashed contours denote the isotherms of the potential temperature.



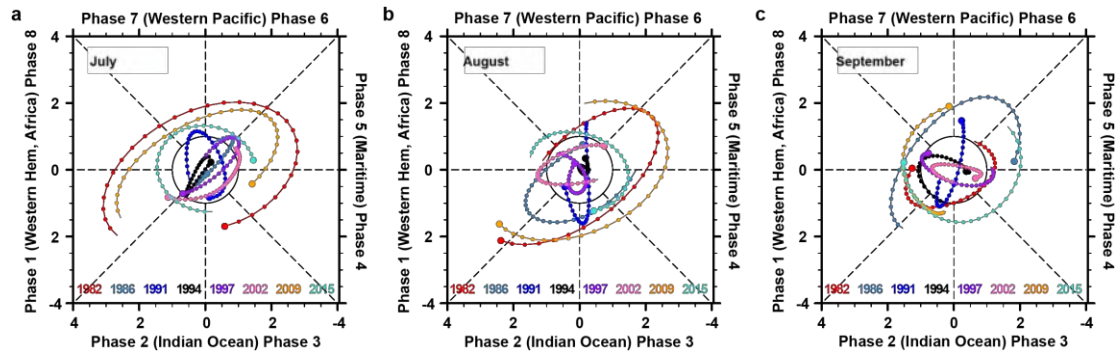
Supplementary Figure 10 Composite of depth–zonal distributions of monthly equatorial potential temperature anomalies averaged between 5°S–5°N (shading; °C) during the El Niño developing years (2004–2016). a, Distribution of monthly equatorial potential temperature anomalies after removing the proceeding (3 months earlier) WNP ACE. b, As in a, but for that relating to the proceeding WNP ACE. An El Niño developing year is defined when the above-moderate El Niño events (including moderate events) develops from weak to strong.



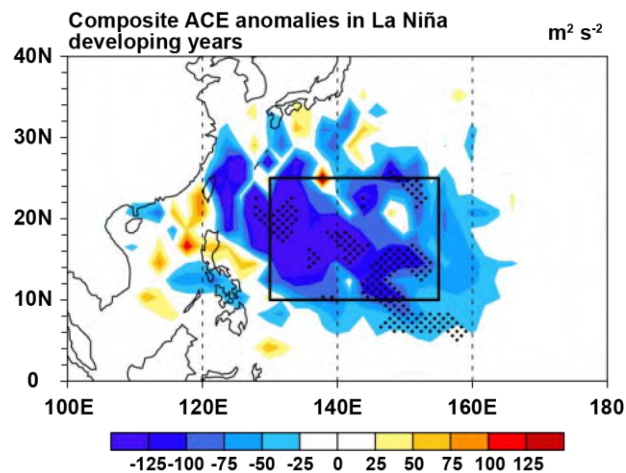
Supplementary Figure 11 Lead–lag correlations between the accumulated cyclone energy (ACE) anomalies over the western North Pacific (10°–20°N, 135°–170°E; WNP) and the running 3-month mean SST anomaly for the Niño 3.4 region (5°N–5°S, 120°–170°W) (N3.4, an ENSO index) together with their autocorrelations in the period 1979–2016. **a–b** As in Supplementary Figure 2, but for the ERA Interim dataset. **c–d**, as in **a–b**, but for the WNP ACE and N3.4 after removal of the Madden–Julian Oscillation (MJO) index.



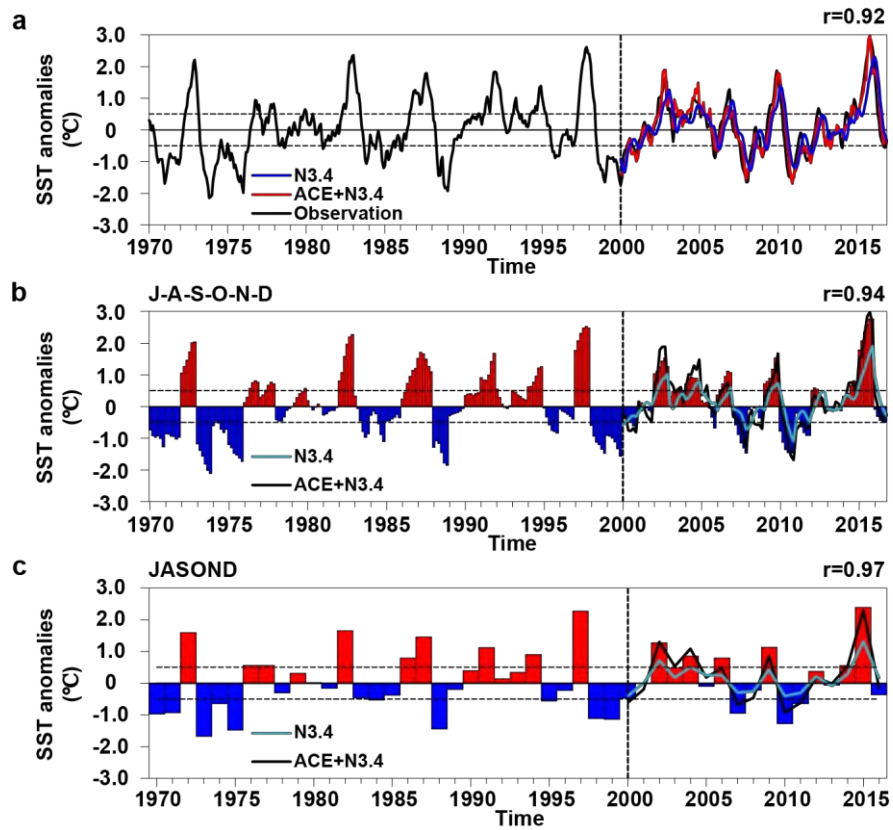
Supplementary Figure 12 Time series of the preceding (3 months earlier) accumulated cyclone energy (ACE) anomalies ($m^2 s^{-2}$) over the western North Pacific (10° – 20° N, 135° – 170° E; WNP) and the running 3-month mean SST anomaly for the Niño 3.4 region (5° N– 5° S, 120° – 170° W) (N3.4, an ENSO index, $^{\circ}$ C), and regressions onto the N3.4 from 1979 to 2016. **a, Preceding N3.4. $N3.4_0$ denotes the original series, and $N3.4_0^*$ indicates the series not associated with the Madden–Julian Oscillation (MJO) index. **b**, Preceding ACE. ACE_0 denotes the original series, and ACE_0^* indicates the series not associated with the preceding MJO. **c**, Regression on the N3.4. $N3.4_ACE_0$ denotes the regression of the preceding ACE index on the N3.4, and $N3.4_ACE_0^*$ indicates the regression of the preceding ACE index not associated with the MJO on the N3.4.**



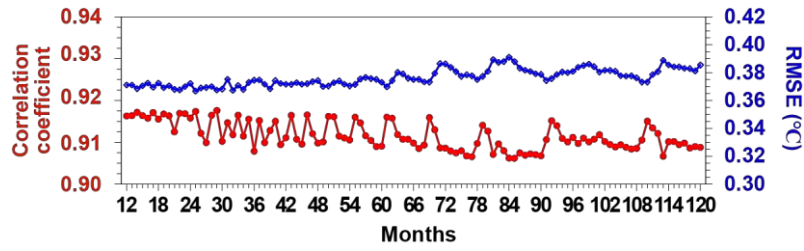
Supplementary Figure 13 Phase distribution of the daily Madden–Julian Oscillation index in each month from July to September during El Niño developing years in the period 1979–2016. a, July. b, August. c, September. Large dots indicate the first day of each month, small dots are one day, and lines are one year. An El Niño developing year is defined when the above-moderate El Niño events (including moderate events) develops from weak to strong.



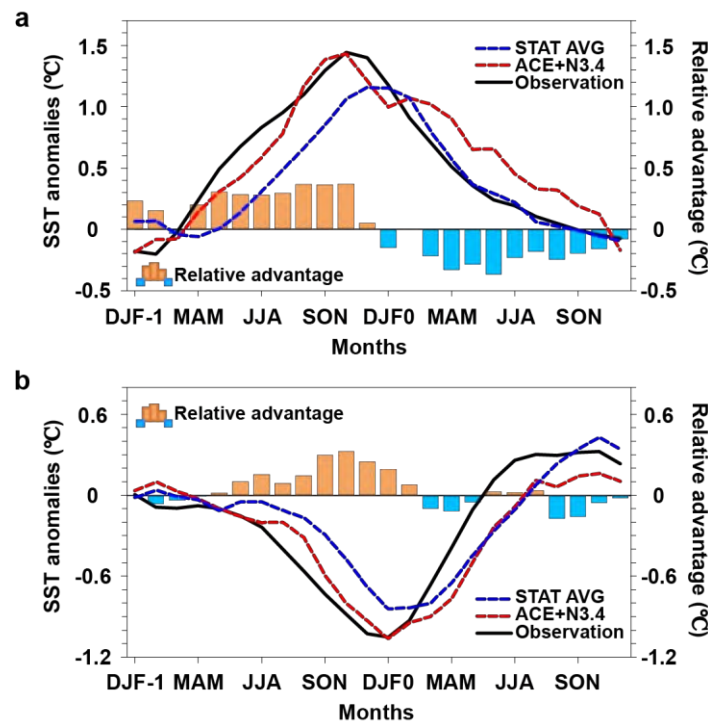
Supplementary Figure 14 Composite of the accumulated cyclone energy (ACE) anomalies (shading, $\text{m}^2 \text{s}^{-2}$) over the western North Pacific during the La Niña developing years (all months) from 1970 to 2016. The stippled regions indicate statistical significance above the 99% confidence level (Student's t -test). The black rectangle denotes the selected ACE region (10° – 25°N , 130° – 155°E). A La Niña developing year is defined when the above-moderate La Niña events (including moderate events) develops from weak to strong.



Supplementary Figure 15 Time series of the running 3-month mean SST anomaly for the Niño 3.4 region (5°N–5°S, 120°–170°W) (N3.4, an ENSO index, °C) for observations and predictions using the running holdout method. a, Time series of N3.4 for all months in the period 1970–2016. The two horizontal black dashed lines indicate 0.5°C and –0.5°C N3.4, and the vertical line divides the training and hindcasting periods. The black solid line indicates observations. The blue (red) solid line is the prediction from the N3.4 model (ACE+N3.4 model) for the period 2000–2016 and r is the correlation coefficient. **b,** Same as **a**, but for July–December (J–A–S–O–N–D). Bars denote observations and red (blue) indicates positive (negative) anomalies. Turquoise (black) solid line is the prediction from the N3.4 model (ACE+N3.4 model) in the period 2000–2016. **c,** Same as **b**, but for the mean value from July to December (JASOND).



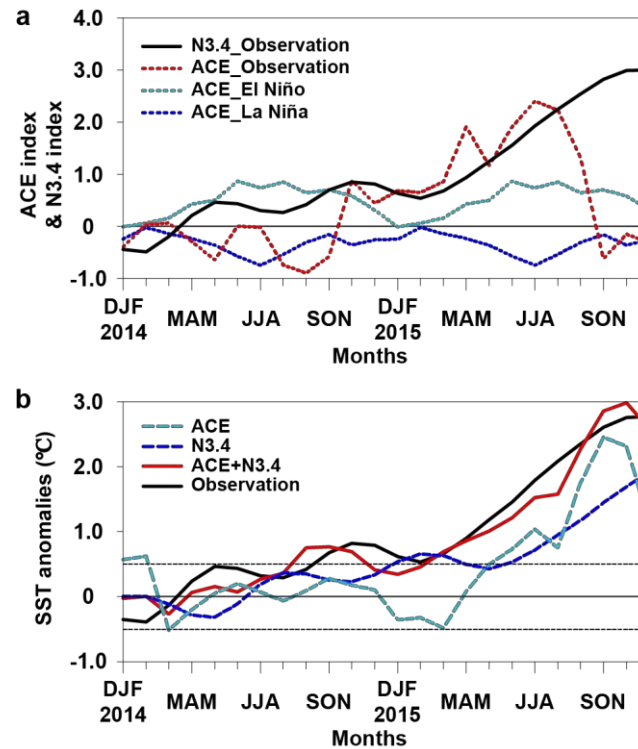
Supplementary Figure 16 Correlation coefficient and root mean square error (RMSE, °C) between the observed and predicted running 3-month mean SST anomaly for the Niño 3.4 region (5°N–5°S, 120°–170°W) (N3.4, an ENSO index), from ACE+N3.4 model using the method of Leave-P-out Cross-Validation.



Supplementary Figure 17 Composite time series of the running 3-month mean SST anomaly for the Niño 3.4 region (5°N–5°S, 120°–170°W) (N3.4, an ENSO index, °C) for observations and predictions for El Niño–Southern Oscillation events in the hindcasting period (2002–2016). a, Composite time series of N3.4 for all El Niño events. Blue dashed line is the average prediction by statistical models, red for the ACE+N3.4 model. Black solid line is observations. Bars indicate the amplitude of models' relative advantage

($\text{relative advantage}_{\text{model A} \rightarrow \text{model B}} = |\text{Model A} - \text{Observation}| - |\text{Model B} - \text{Observation}|$) between the average of the dynamical models and the ACE+N3.4 model. Blue (orange) bars represent the advantage of the statistical models average relative to the ACE+N3.4 model (ACE+N3.4 model relative to the statistical model average). DJF-1 and DJF0

represent the December–February in last year and the year concurring with El Niño, respectively. **b**, Same as **a**, but for La Niña.



Supplementary Figure 18 Time series of the running 3-month mean SST anomaly for the Niño 3.4 region (5°N–5°S, 120°–170°W) (N3.4, an ENSO index, 2014–2015) for observations and predictions, as well as the observed accumulated cyclone energy (ACE) anomalies over the western North Pacific (10°–20°N, 135°–170°E). **a**, Standardized time series of the observed N3.4 and ACE anomalies. Black solid line is the observed N3.4; red dotted line is the observed ACE; turquoise (blue) line is the composite of ACE anomalies during El Niño (La Niña). **b**, Time series of average N3.4 (°C) from 2014 to 2015. Blue dashed line is the prediction from N3.4 model, turquoise for ACE model; red solid line for ACE+N3.4 model, black for observations.

Supplementary Tables

Supplementary Table 1 Explained percentages (%; red) of the running 3-month mean SST anomaly for the Niño 3.4 region (5°N–5°S, 120°–170°W) (N3.4, an ENSO index) from July to December by the preceding (3 months earlier) accumulated cyclone energy (ACE) anomalies over the western North Pacific (10°–20°N, 135°–170°E) and the corresponding accumulated cyclone energy anomalies ($\text{m}^2 \text{s}^{-2}$; black) 3 months earlier during El Niño developing years for the period 1970–2016. An El Niño developing year is defined when the above-moderate El Niño events (including moderate events) develops from weak to strong.

		4(7)	5(8)	6(9)	7(10)	8(11)	9(12)
1972	ACE	-39.70	28.86	509.23	577.85	554.46	294.35
	Percentage	-23.86	31.26	190.30	170.76	138.24	71.71
1982	ACE	-14.55	2.32	123.91	229.69	207.30	179.06
	Percentage	7.65	17.34	65.77	99.59	70.78	47.50
1986	ACE	105.50	109.52	132.00	-2.73	48.13	24.62
	Percentage	-93.01	-134.86	-286.49	10.95	49.87	26.26
1991	ACE	64.76	41.99	17.72	-94.13	30.03	166.27
	Percentage	65.66	36.98	22.75	-13.10	26.77	73.89
1994	ACE	-21.19	-28.57	-55.19	-45.68	108.09	311.33
	Percentage	2.25	1.13	-13.07	-5.76	67.83	134.56
1997	ACE	163.00	250.10	65.90	186.24	93.17	261.34
	Percentage	133.73	94.60	29.60	45.07	28.60	46.96
2002	ACE	27.79	10.72	368.66	347.45	330.06	-77.17
	Percentage	41.25	21.39	137.64	111.31	99.74	-0.81
2009	ACE	-34.54	-40.47	-77.14	-43.39	79.24	310.50
	Percentage	74.90	-34.49	-24.80	-1.51	45.46	115.77
2015	ACE	242.62	172.30	408.54	567.04	538.22	266.81
	Percentage	88.68	55.93	92.96	103.11	86.48	47.03

Note: The numbers 4–12 in the first row represent April–December, respectively.